

TOSHIBA

FILE NO. 2B0-9803

SERVICE MANUAL

CORDLESS TELEPHONE
FT-7807R



PUBLISHED IN JAPAN, Jun., 1998

CONTENTS

SAFETY PRECAUTIONS	1
OPERATING CONTROLS	2
ALIGNMENT PROCEDURE	3
BLOCK DIAGRAMS	7
SCHEMATIC DIAGRAMS	9
TROUBLESHOOTING HINTS	13
IC AND TRANSISTOR VOLTAGE CHART	19
SEMICONDUCTOR LEAD IDENTIFICATION	23
ELECTRICAL PARTS LOCATION	27
WIRING DIAGRAM	29
EXPLODED VIEW AND MECHANICAL PARTS LIST	30
PARTS LIST	34
ASSEMBLY PARTS LIST	48
SPECIFICATIONS	49
APPENDIX	52

SAFETY PRECAUTIONS

Before returning any models to the customer, a safety check of the entire instrument should be made. The service technician must be sure that no protective device built into the instrument by the manufacturer has become defective or inadvertently degraded during servicing.

1. WARNING:

Alterations of the design or circuitry of these models should not be made.

Any design changes or additions such as, but not limited to, circuit modifications, auxiliary speaker jacks, switches, grounding, active or passive circuitry, etc. may alter the safety characteristics of these models and potentially create a hazardous situation for the user.

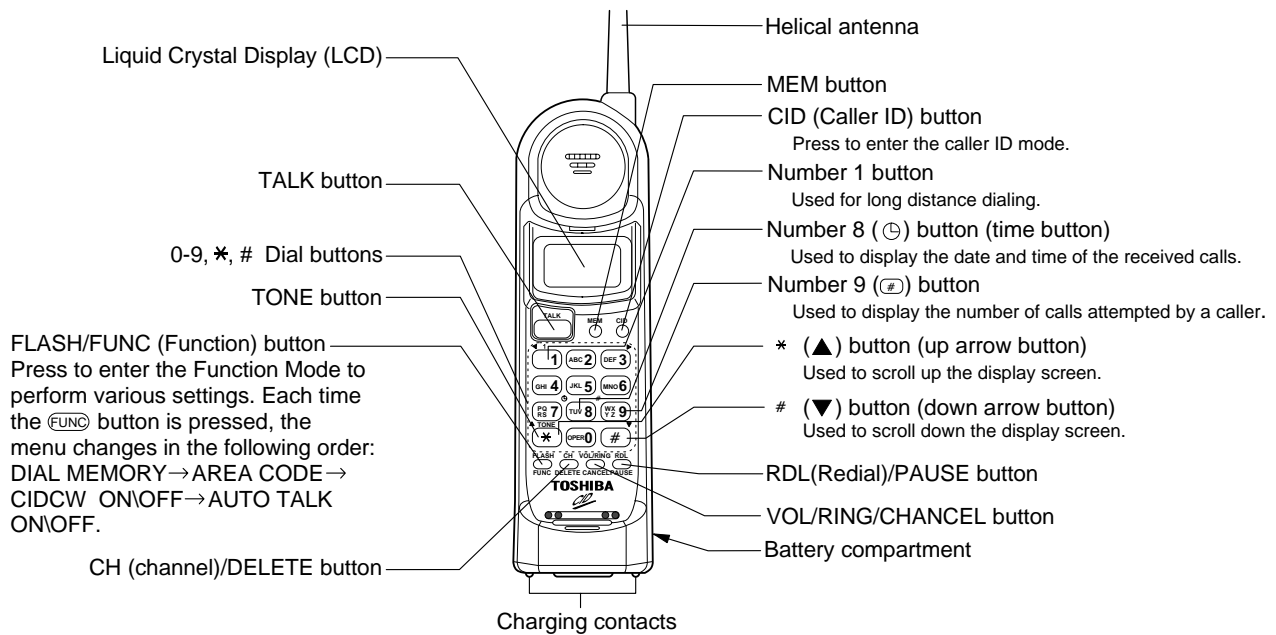
Any design alterations or additions will void the manufacturer's warranty and will further relieve the manufacturer of responsibility for personal injury or property damage resulting therefrom.

2. PRODUCT SAFETY NOTICE

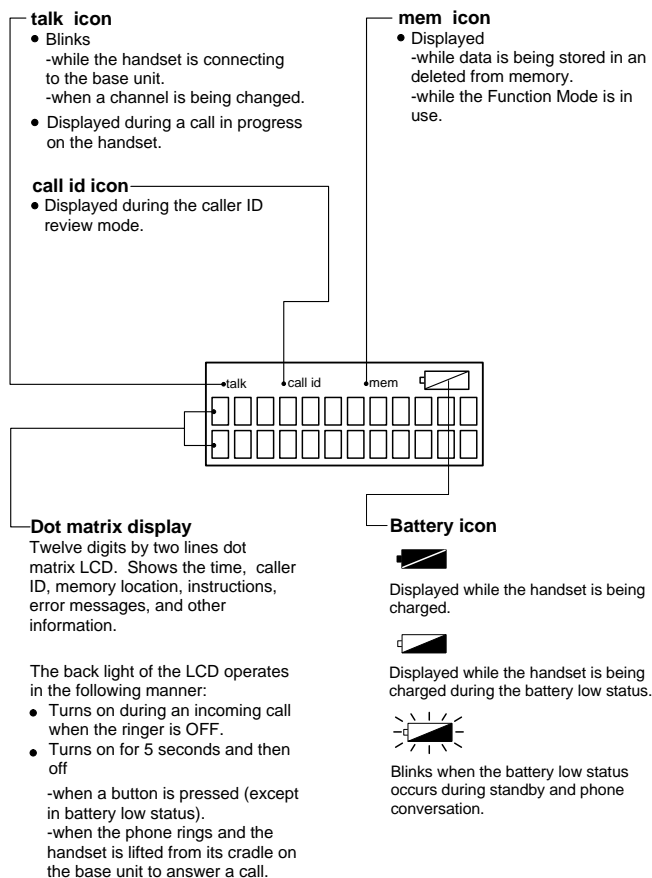
Many electrical and mechanical parts in this chassis have special characteristics. These characteristics often pass unnoticed and the protection afforded by them cannot necessarily be obtained by using replacement components rated for higher voltage, wattage, etc. Replacement parts that have these special safety characteristics are identified in this manual and its supplements; electrical components having such features are identified by a ⚠ in the schematic diagram and the parts list. Before replacing any of these components, read the parts list in this manual carefully. The use of substitute replacement parts that do not have the same safety characteristics as specified in the parts list may create shock, fire or other hazards.

OPERATING CONTROLS

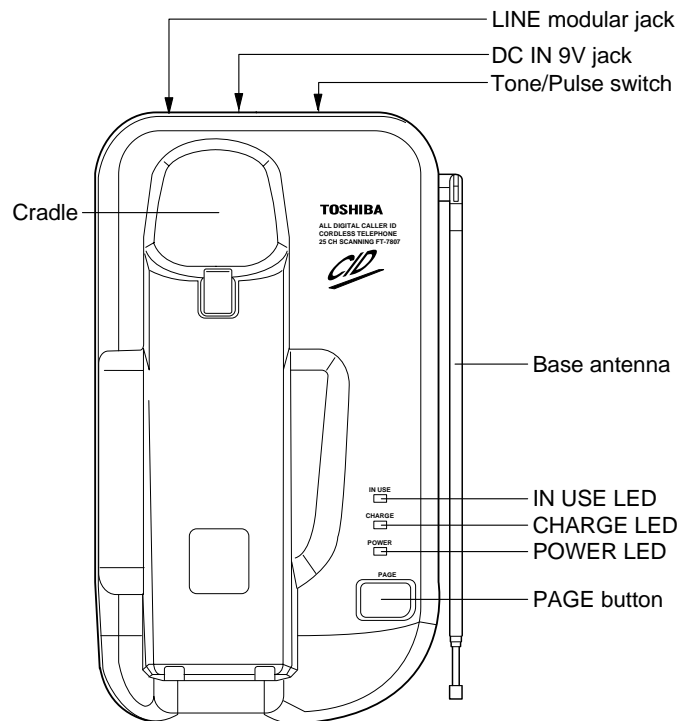
HANDSET CONTROLS



LCD



BASE UNIT CONTROLS

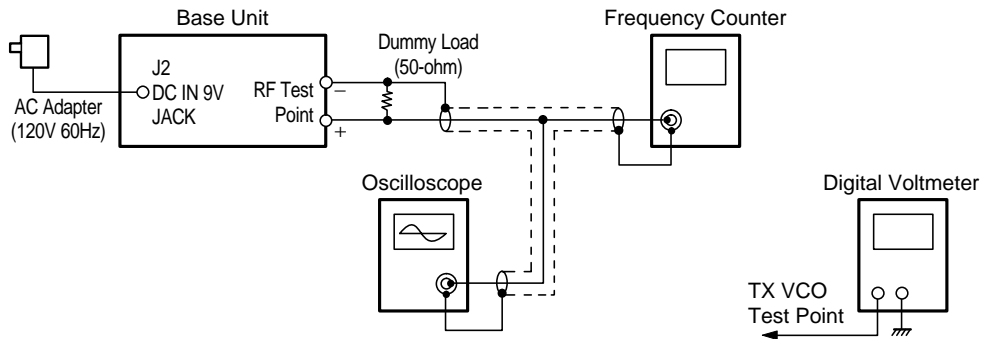


ALIGNMENT PROCEDURE

BASE UNIT / TRANSMITTER

Test Equipment Required and Connections

- Oscilloscope
- Frequency Counter
- Digital Voltmeter
- Dummy Load, 50-ohm
- AC Power Supply: 120V, 60Hz (With AC Adapter)



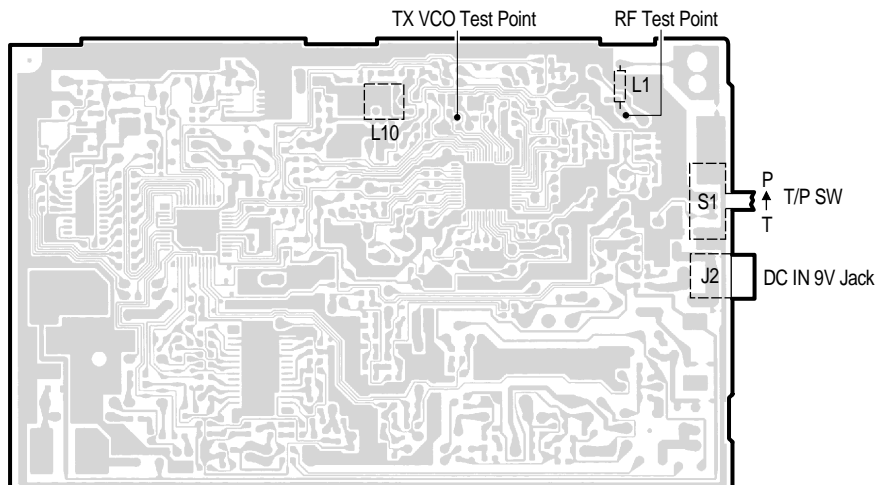
Preset

- Set T/P SW to Pulse Mode.
- Turn on AC power while the Page key is being depressed.
- Release the Page key about 2 seconds later, then the TX Mode is entered (CH21).

Alignment Procedure

Step	Adjustment	Remarks
1	L10	Connect the oscilloscope across a 50-ohm load to RF test point. Set the digital voltmeter at the test point of TX VCO. Adjust L10 to indicate DC 2.8 ± 0.05 V (VCO).
2	—	Connect the frequency counter across a 50-ohm dummy load to RF test point. Make sure that the frequency is $46.770 \text{ MHz} \pm 1500 \text{ Hz}$.

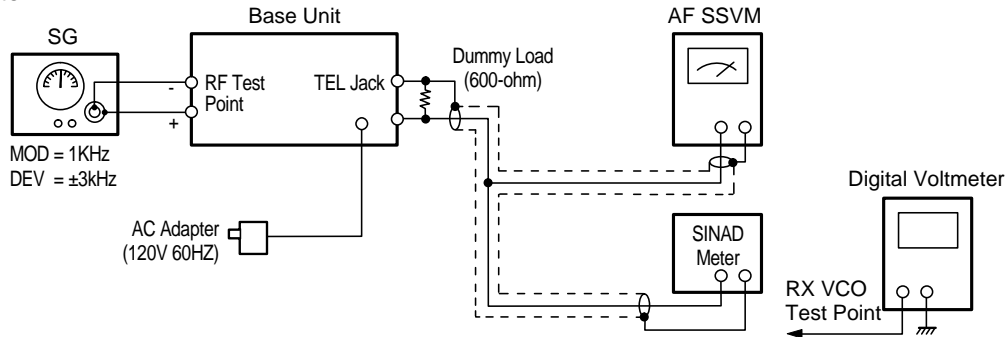
Alignment Point Location on Main (Base Unit) PCB



RECEIVER

Test Equipment Required and Connections

- SG: RF Signal Generator, 49.830 MHz, 49.160 MHz
- Digital Voltmeter
- SINAD Meter
- Dummy Load, 600-ohm
- AF SSVM



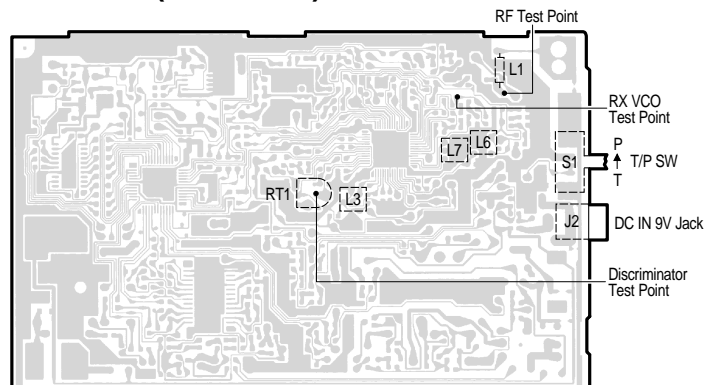
Preset

- a) Set T/P SW to Pulse Mode.
- b) Turn on AC power while the Page key is being depressed.
- c) Release the Page key about 2 seconds later, then the TX Mode is entered (CH21).
- d) Press the Page key 4 times, then the RX Mode is entered (CH21).

Alignment Procedure

Step	Preset to	Adjustment	Remarks
1	SG: 1 mV No modulation	L7	Connect the SG to the RF test point. Connect the digital voltmeter to the test point of the RX VCO. Adjust L7 to indicate DC 1.4 ±0.05 V.
2	SG: 1 mV 1 kHz ±3kHz deviation	L3	Connect the digital voltmeter to the test point of Discriminator. Adjust L3 to indicate DC 2.0 ±0.05V.
3	SG: 1 mV 1 kHz ±3 kHz deviation	RT1	Adjust RT1 to make AF SSVM value -5 dBm ±0.5 dB.
4	SG: 1 mV 1 kHz ±3 kHz deviation	L6	Set T/P SW to TONE Mode. Press the Page key once, then CH changes to CH 8. Connect the AF SSVM to the TEL LINE across a 600-ohm dummy load. Keep the SINAD reading at 12 dB by adjusting the SG output. Adjust L6 for maximum SINAD reading.

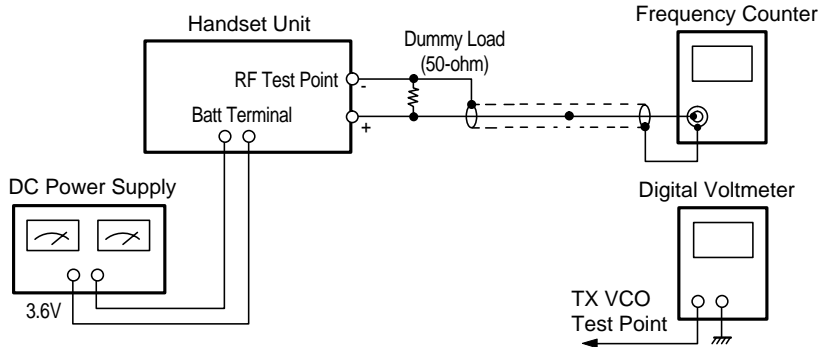
Alignment Point Location on Main (Base Unit) PCB



HANDSET / TRANSMITTER

Test Equipment Required and Connections

- DC Power Supply, 3.6V
- Digital Voltmeter



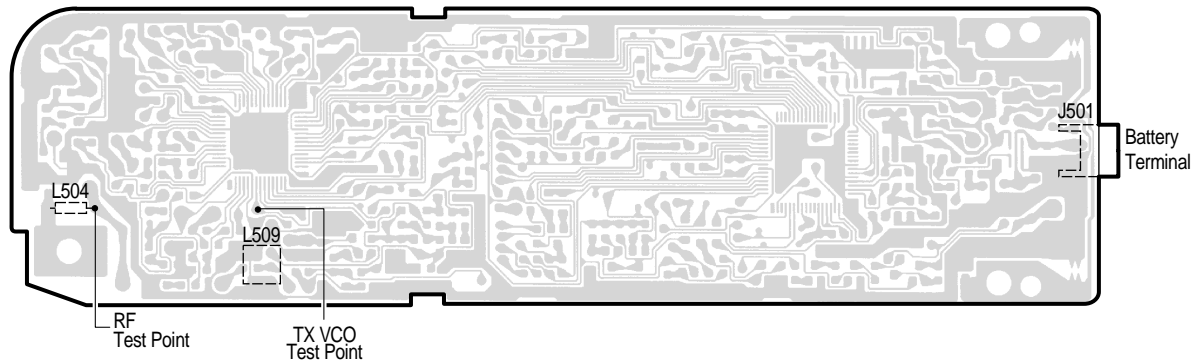
Preset

Turn Power on while depressing “*” and “#” keys. A beep will be heard. Then the TX Mode is entered (CH21).

Alignment Procedure

Step	Adjustment	Remarks
1	L509	Set the digital voltmeter at the test point of TX VCO, then adjust L509 to indicate DC 2.0 V \pm 0.05 V at CH21.
2	—	Connect the frequency counter across a 50-ohm dummy load to RF test point. Make sure that the frequency is 49.830 MHz \pm 1500 Hz.

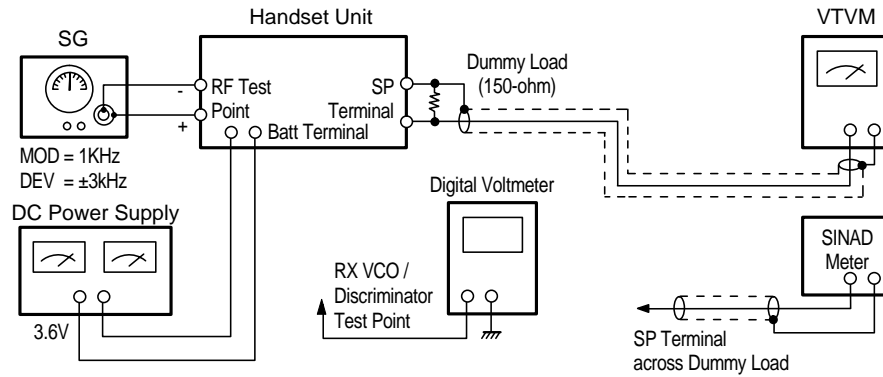
Alignment Point Location on Main (Handset Unit) PCB



RECEIVER

Test Equipment Required and Connections

- SG: RF Signal Generator, 46.770 MHz, 46.610 MHz
- VTVM
- Digital Voltmeter
- Dummy Load, 150-ohm
- DC Power Supply: 3.6 V
- SINAD Meter



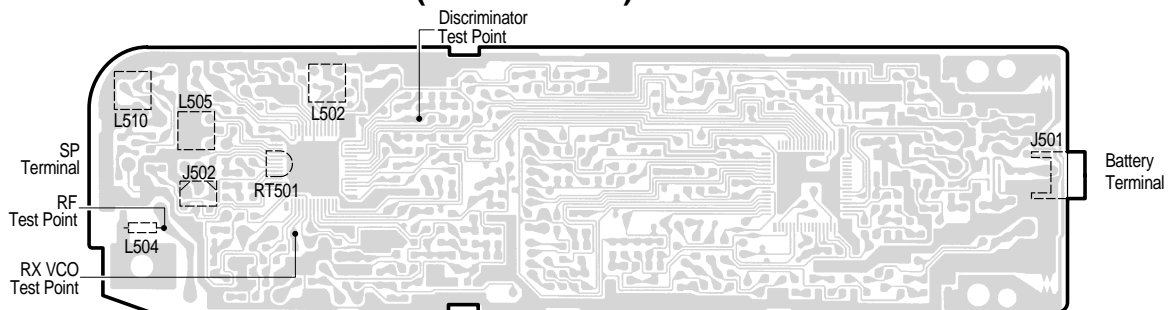
Preset

- Turn Power on while depressing “*” and “#” keys. A beep will be heard. Then the TX Mode is entered (CH21).
- Press “4” key, then the RX ADJ Mode is entered (CH21).

Alignment Procedure

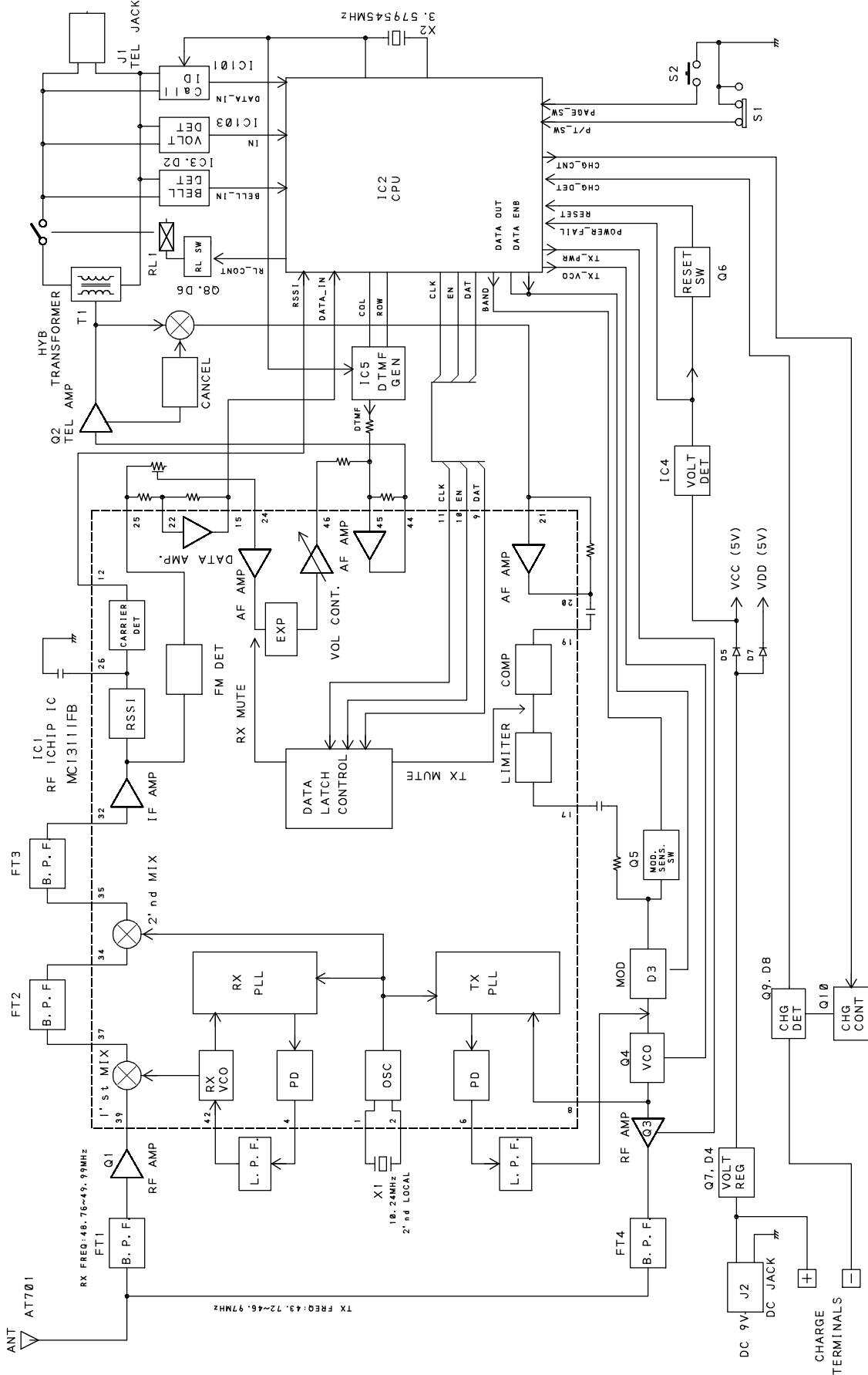
Step	Preset to	Adjustment	Remarks
1		L505	Connect the digital voltmeter to the test point (RX VCO). Adjust for 1.4 V DC at CH21.
2	SG: 1 mV (CH21) MOD OFF	L502	Connect the digital voltmeter to the test point (Discriminator). Adjust for 1.1 V DC at CH21.
3	SG: 1 mV (CH21) 1 kHz ±3 kHz dev.	RT501	Connect the VTVM to the speaker terminal. Adjust for 115 mV on the VTVM (SP. OUT) at CH21.
4	SG: 158 μV (CH16) 1 kHz ±3 kHz dev.	L510	Press the “CH” twice to change the channel to CH16. Adjust for maximum SINAD on the SINAD METER at CH16.
5	SG: 3 μV (CH16) 1 kHz ±3 kHz dev.	L510	Adjust for maximum SINAD on the SINAD meter at CH16.
6	SG: 1 μV (CH16) 1 kHz ±3 kHz dev.	L510	Adjust for maximum SINAD on the SINAD meter at CH16.

Alignment Point Location on Main (Handset Unit) PCB

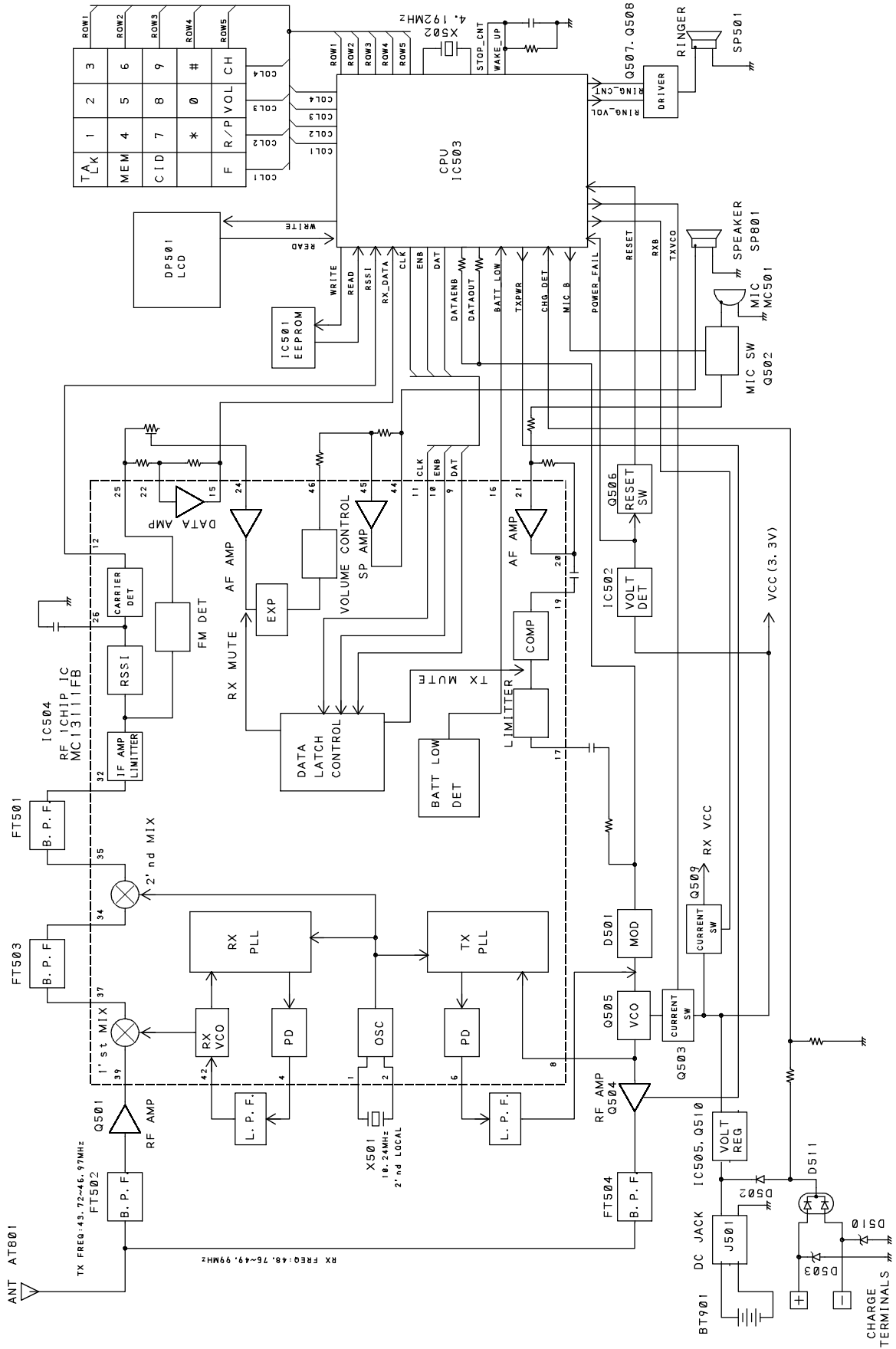


BLOCK DIAGRAMS

Base

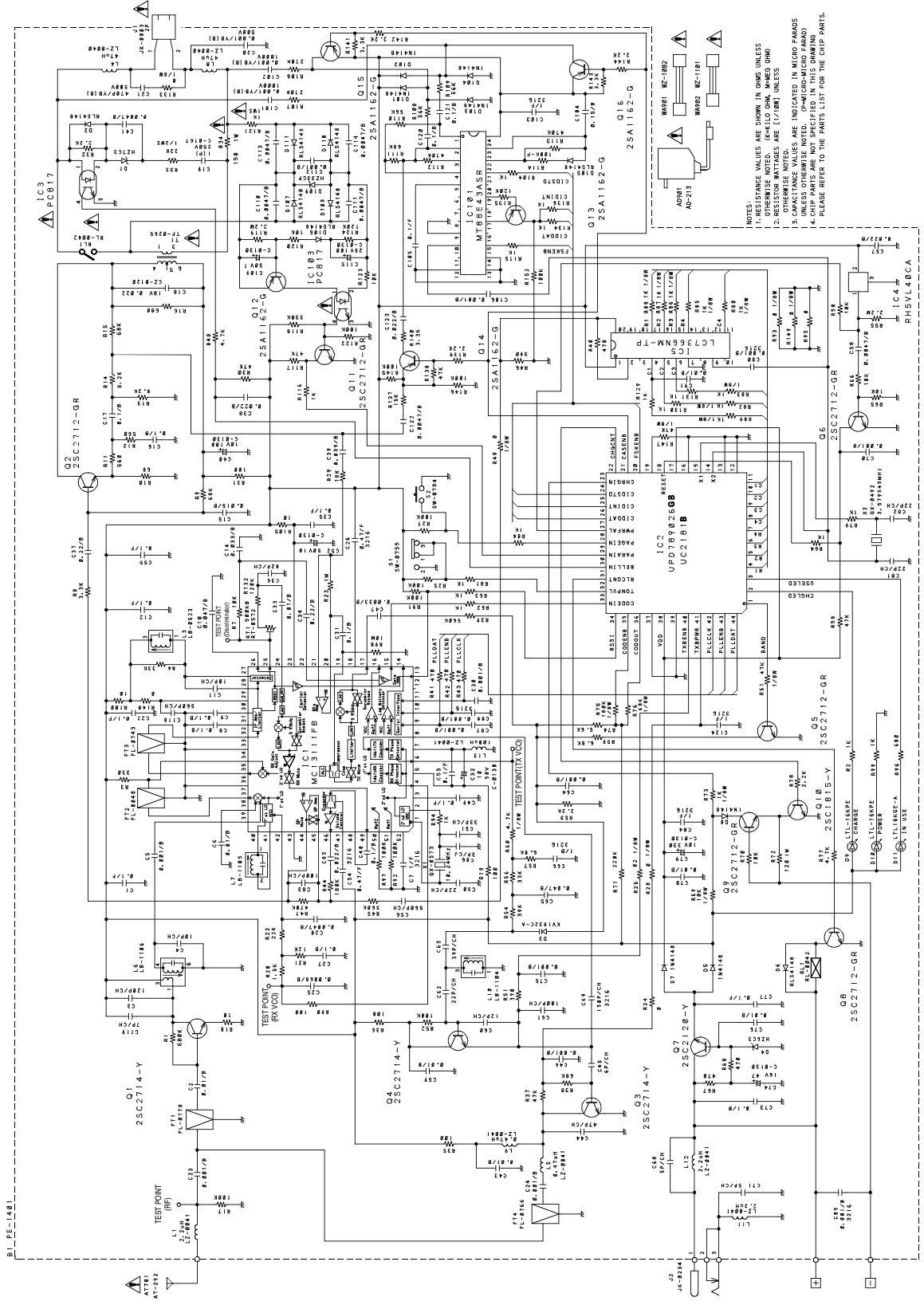


Handset



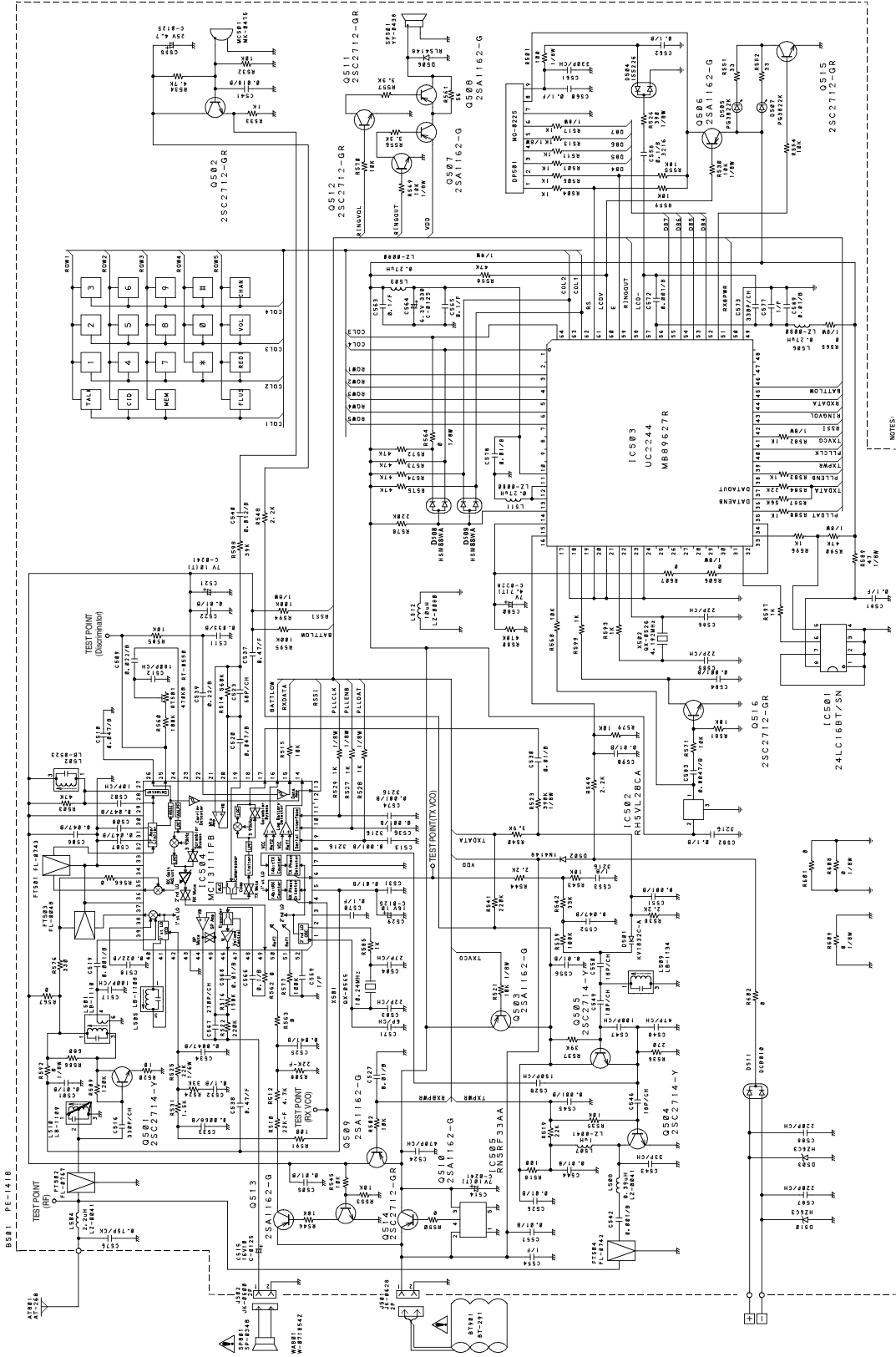
SCHEMATIC DIAGRAMS

Base, Main



- NOTES:
1. RESISTANCE VALUES ARE SHOWN IN OHMS UNLESS OTHERWISE NOTED.
 2. RESISTOR RATINGS ARE 1/4W UNLESS OTHERWISE NOTED.
 3. CAPACITANCE VALUES ARE IN MICROFARADS UNLESS OTHERWISE NOTED.
 4. CHIP PARTS ARE NOT SPECIFIED IN THIS DRAWING. PLEASE REFER TO THE PARTS LIST FOR THE CHIP PARTS.

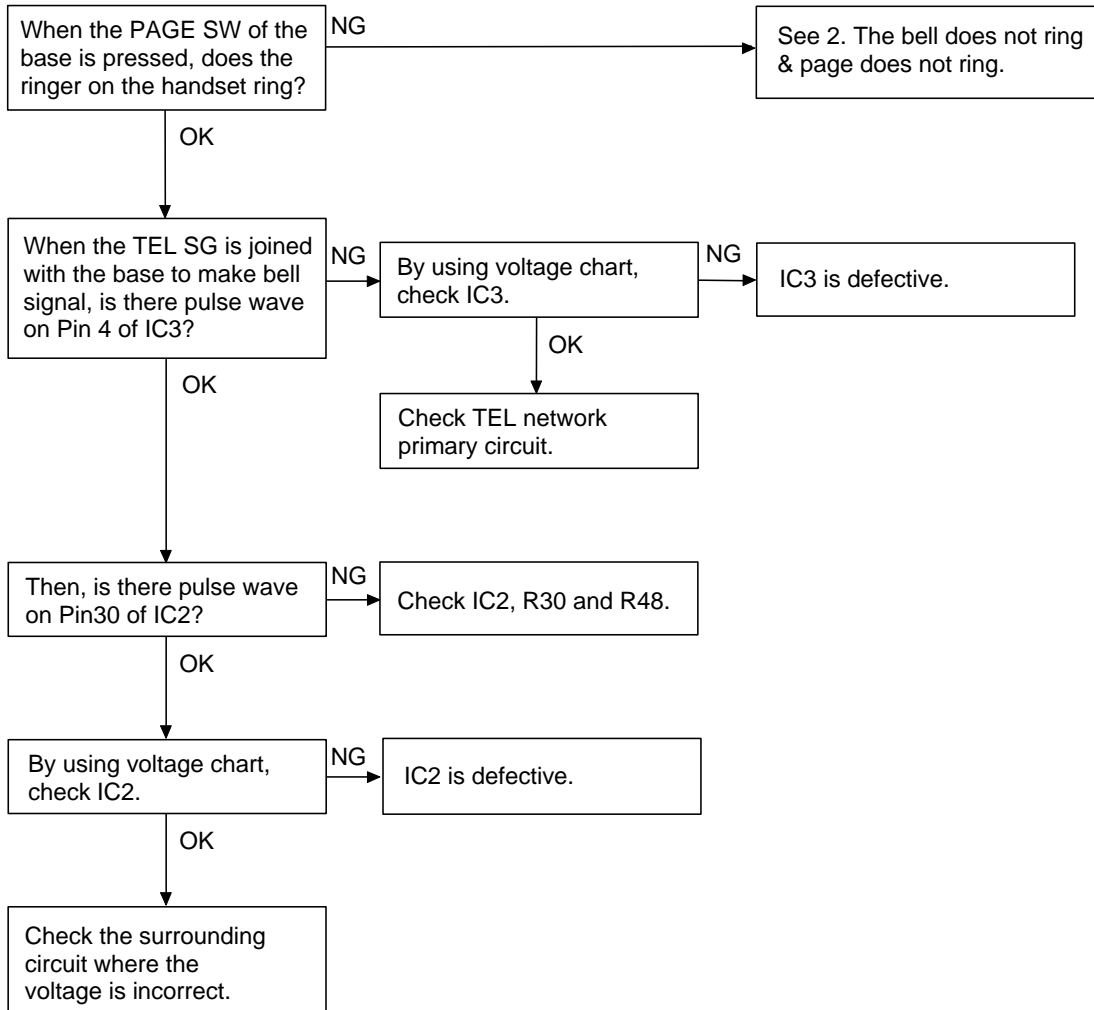
Handset, Main



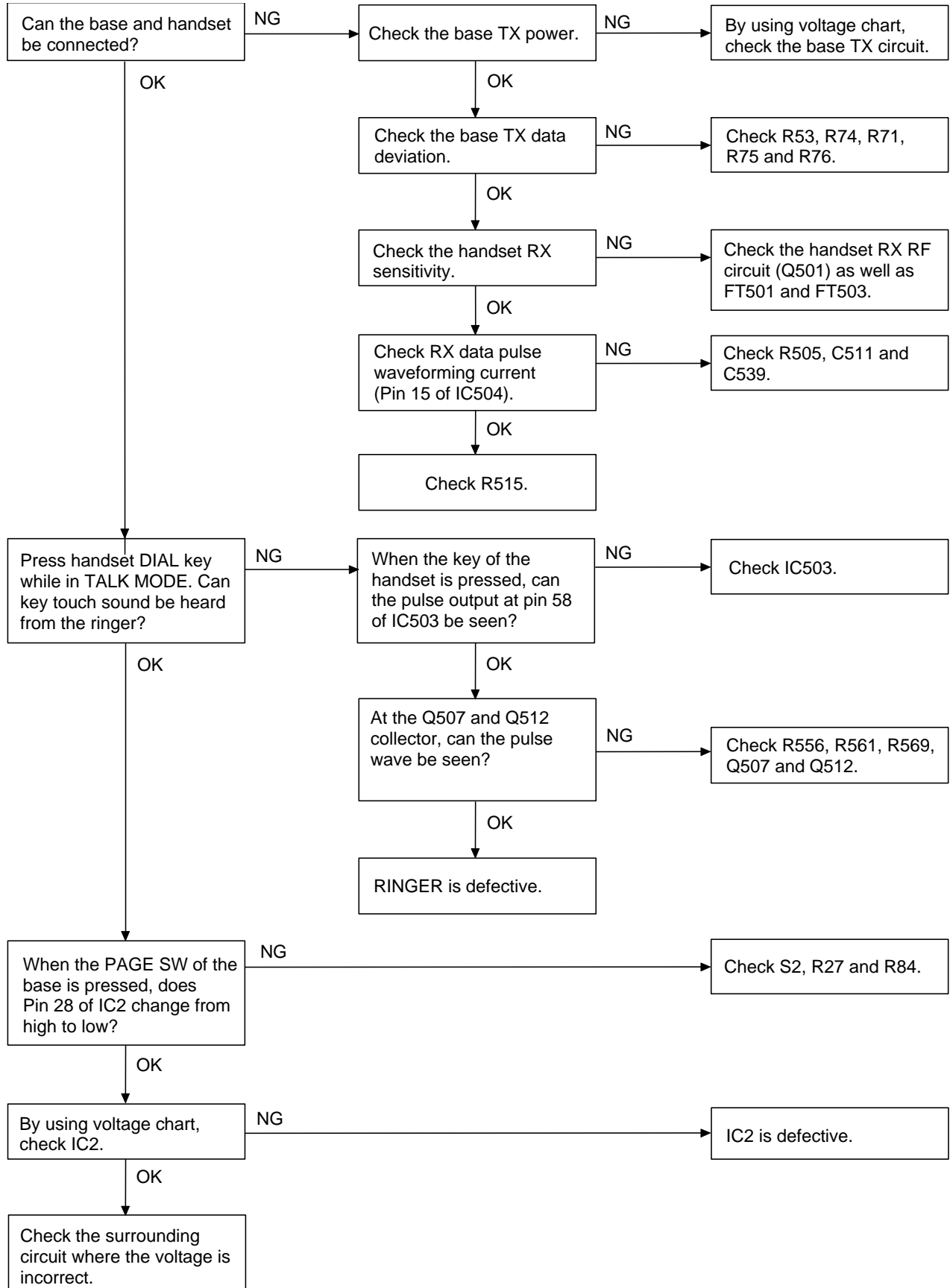
- NOTES:
1. RESISTANCE VALUES ARE SHOWN IN OHMS UNLESS OTHERWISE NOTED. (K=KILLO OHM, M=MEG OHM)
 2. CAPACITANCE VALUES ARE IN PICO FARADS UNLESS OTHERWISE NOTED.
 3. CAPACITANCE VALUES ARE INDICATED IN MICRO FARADS UNLESS OTHERWISE NOTED.
 4. CHIP PARTS ARE NOT SPECIFIED IN THIS DRAWING. PLEASE REFER TO THE PARTS LIST FOR THE CHIP PARTS.

TROUBLESHOOTING HINTS

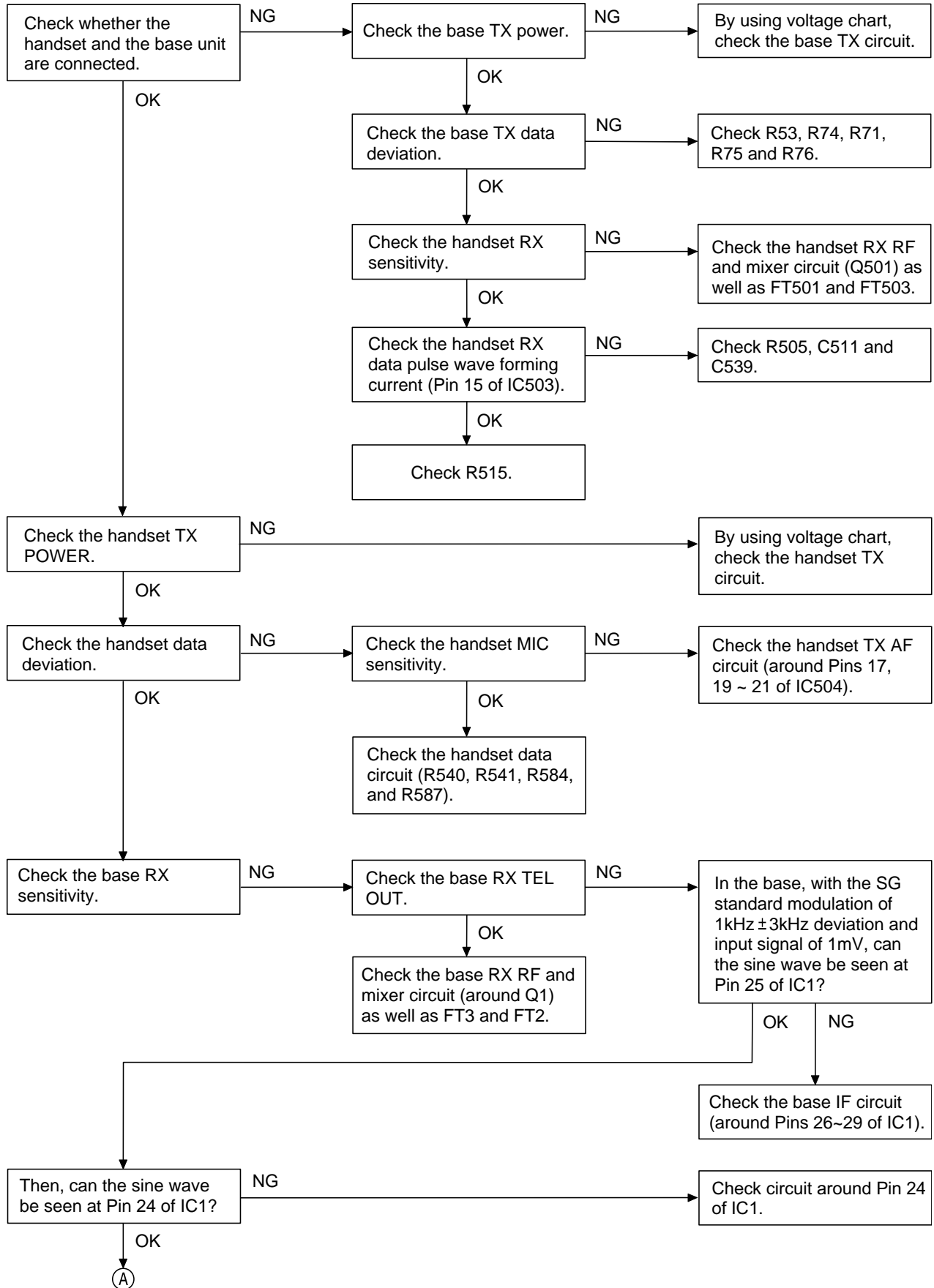
1. The bell does not ring.



2. The bell does not ring & page does not ring.

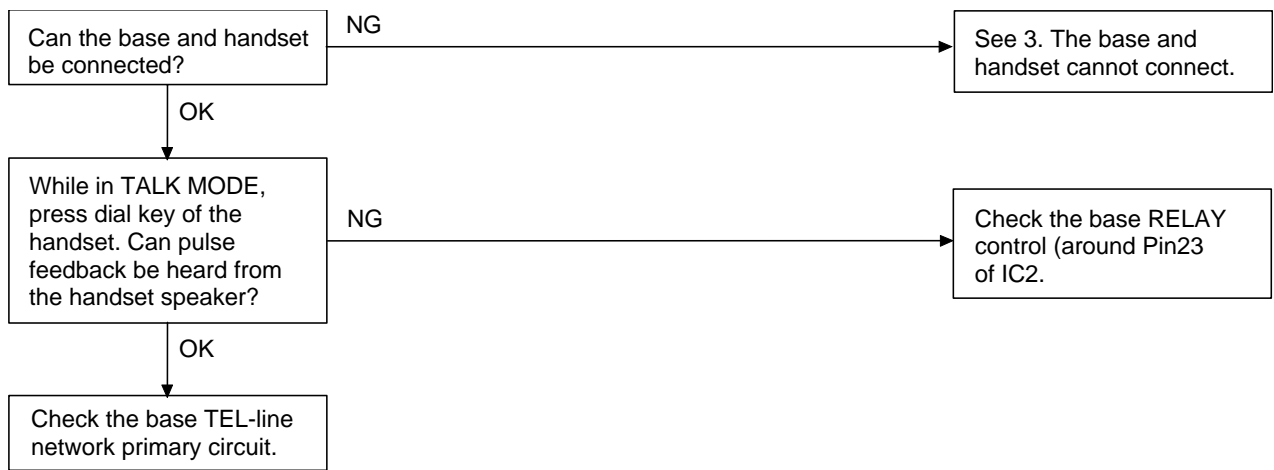


3. The base and handset cannot connect.

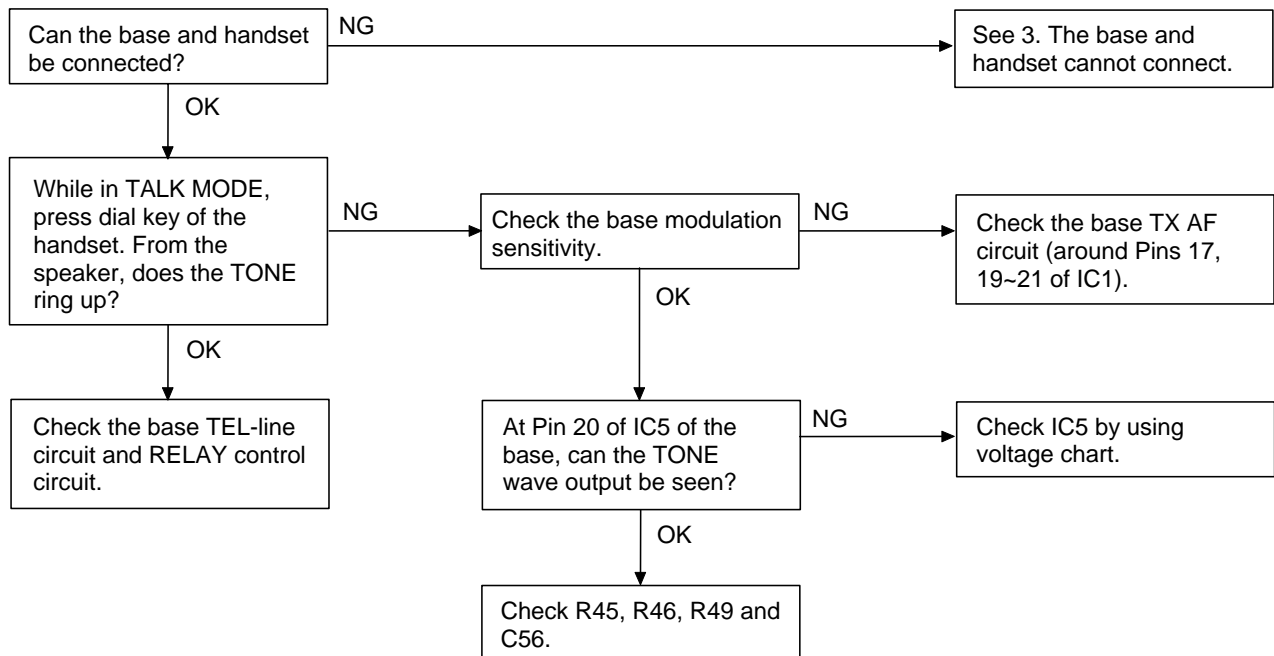




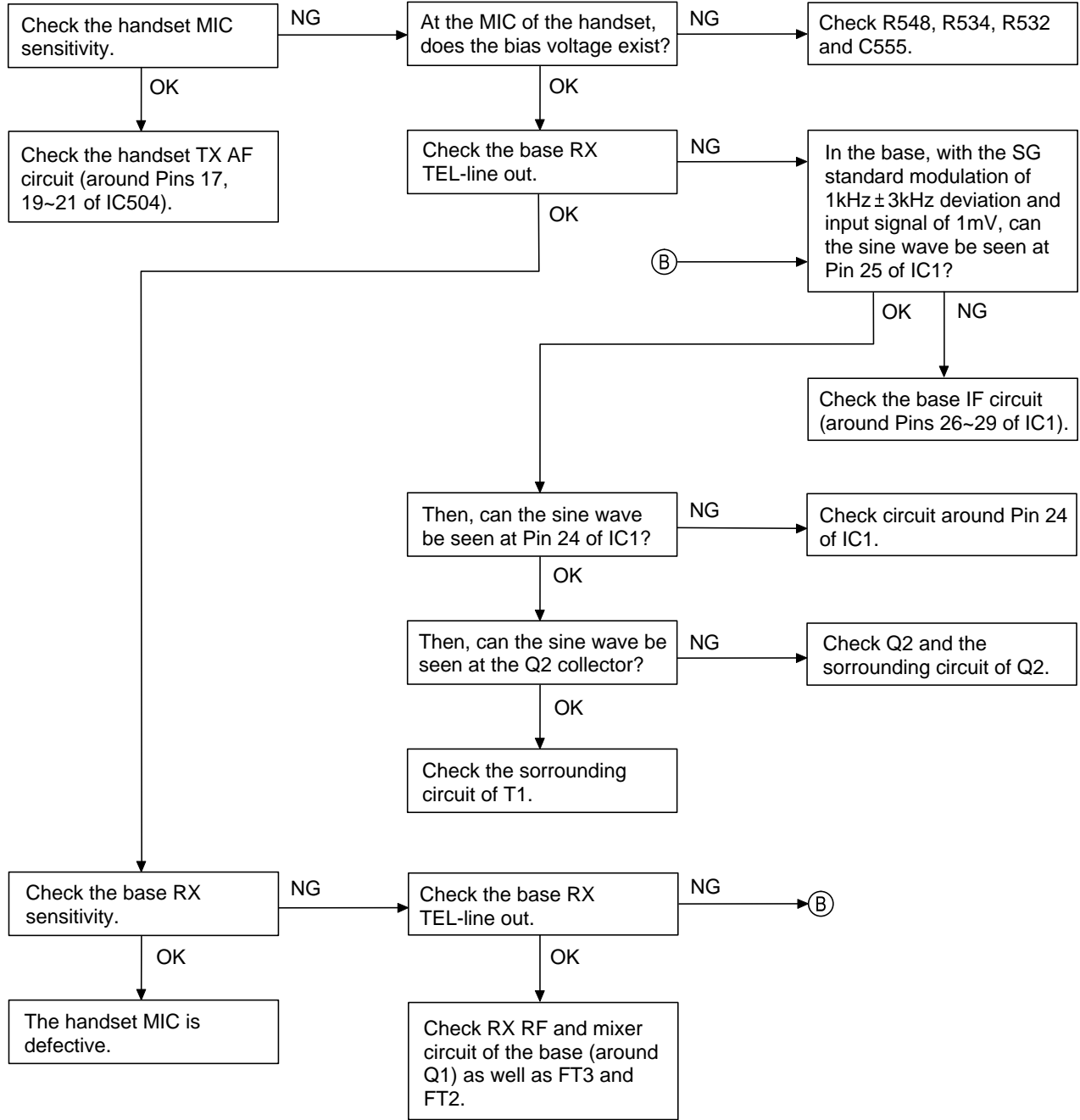
4. Cannot make a phone call (pulse).



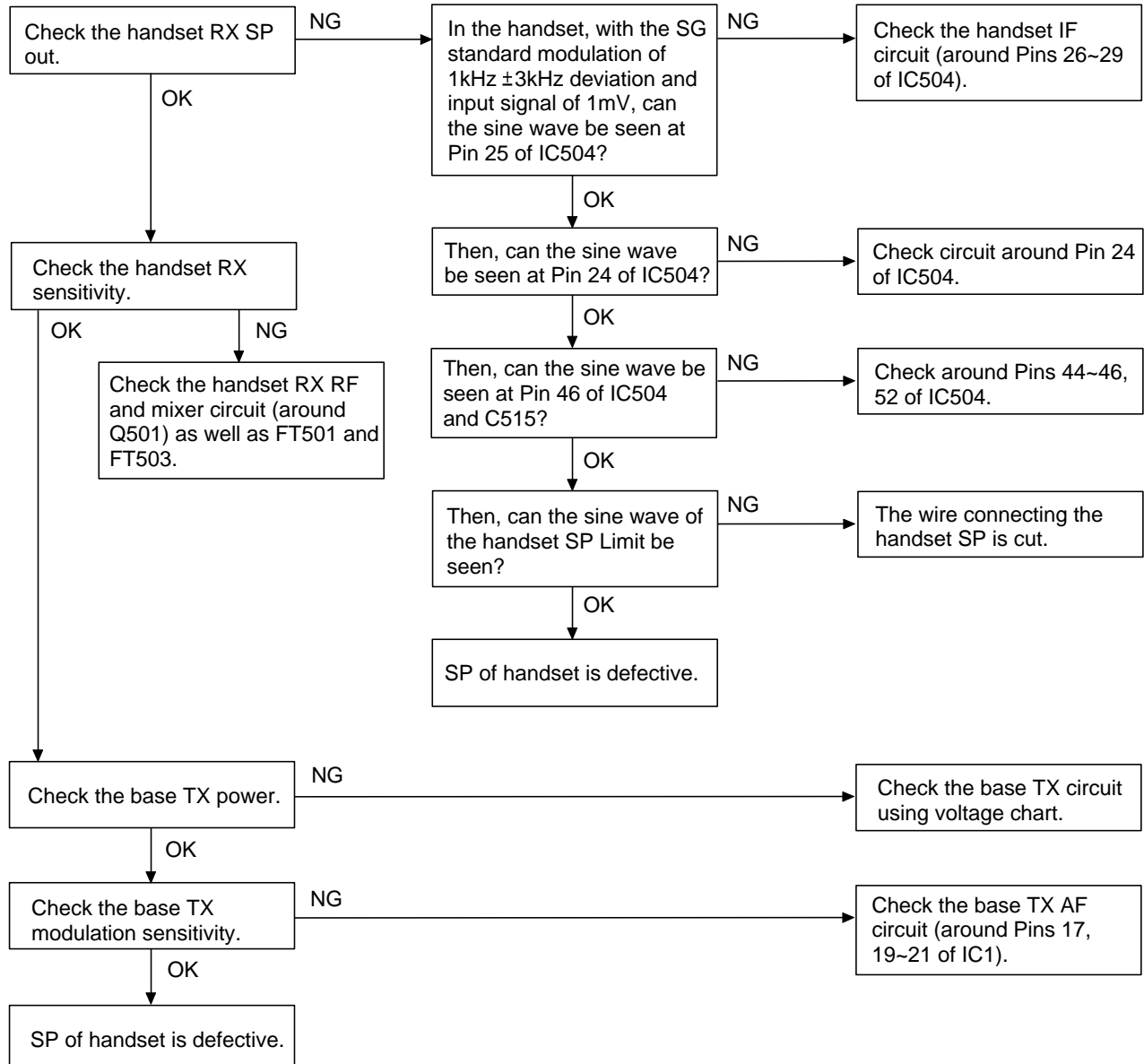
5. Cannot make a phone call (tone).



6. Voice cannot be transmitted to other party (outgoing call).



7. The voice of the caller cannot be heard (incoming call).



IC AND TRANSISTOR VOLTAGE CHART

Transistors Unit [V]

Ref. No.	Pin	STBY	TALK	Note
Q1	B	0.7	0.7	
	C	4.7	4.8	
	E	0.0	0.0	
Q2	B	1.3	1.3	
	C	3.6	3.5	
	E	0.7	0.6	
Q3	B	0.0	0.7	
	C	4.7	3.3~4.8	
	E	0.0	0.0	
Q4	B	4.7	1.6~2.2	
	C	4.7	4.5	
	E	4.3	1.2~1.6	
Q5	B	0.0~0.6	0.6	
	C	0.0	0.0	
	E	0.0	0.0	
Q6	B	0.0	0.0	
	C	4.9	4.9	
	E	0.0	0.0	
Q7	B	9.0	9.0	
	C	6.2	6.2	
	E	5.7	5.7	
Q8	B	0.0	0.7	
	C	9.0	0.0	
	E	0.0	0.0	
Q9	B	0.0	0.0	
	C	4.5	4.5	
	E	0.0	0.0	
Q10	B	0.0	0.0	
	C	0.7	0.7	
	E	0.0	0.0	
Q11	B	0.6	0.5	
	C	0.0	0.1	
	E	0.0	0.0	
Q12	B	0.0	0.0	
	C	0.0	0.0	
	E	0.0	0.0	
Q13	B	4.7	4.7	
	C	0.0	0.0	
	E	4.7	4.7	
Q14	B	4.9	0.2	
	C	0.0	0.7	
	E	3.7	0.7	
Q15	B	4.9	4.0	
	C	0.0	4.7	
	E	4.8	4.7	
Q16	B	0.0	4.0	
	C	0.0	4.7	
	E	4.7	4.7	

Unit [V]

Ref. No.	Pin	STBY	TALK	Note
Q501	B	0.0~0.8	0.7	
	C	0.0~3.2	3.3	
	E	0.0	0.1	
Q502	B	0.0	1.0	
	C	0.0	1.9	
	E	0.0	0.3	
Q503	B	2.8~3.3	2.5	
	C	0.0	3.2	
	E	3.3	3.3	
Q504	B	0.0	0.6~0.8	
	C	0.0	1.4~3.4	
	E	0.0	0.1	
Q505	B	0.0	1.4~2.2	
	C	0.0	3.2	
	E	0.0	0.7~1.4	
Q506	B	3.2	2.7	
	C	0.0~2.0	3.3	
	E	3.3	3.3	
Q507	B	3.0	3.0	
	C	0.0	0.0	
	E	3.6	3.5	
Q508	B	0.0	0.0	
	C	0.0	0.0	
	E	0.0	0.0	
Q509	B	2.6	2.8	
	C	3.3	0.0~3.2	
	E	3.3	3.3	
Q510	B	2.8	2.8~3.3	
	C	3.3	3.3	
	E	3.5	3.6	
Q511	B	0.0	0.0	
	C	0.0	0.0	
	E	0.0	0.0	
Q512	B	0.0	0.0	
	C	3.3	3.0	
	E	0.0	0.0	
Q513	B	3.0	2.9	
	C	0.0	3.5	
	E	3.6	3.5	
Q514	B	0.0~0.6	0.7	
	C	3.0	0.0	
	E	0.0	0.0	
Q515	B	0.0	0.0	
	C	2.0	2.0	
	E	0.0	0.0	
Q516	B	0.0	0.0	
	C	3.2	3.2	
	E	0.0	0.0	

IC'S

Unit [V]

Ref. No.	Pin	STBY	TALK	Note
IC1	1	0~4.2	0~4.2	
	2	0.4~4.0	0.4~4.0	
	3	1.5	1.5	
	4	0.0	0.0	
	5	4.5	4.5	
	6	4.5	1.5	
	7	0.0	0.0	
	8	4.5	4.2~4.7	
	9	0~4.9	0.0	
	10	0~4.9	0.0	
	11	0~4.9	0.0	
	12	0.0	0.0	
	13	4.7	0.0	
	14	0.0	0.0	
	15	0~4.7	0.0	DATA
	16	0.0	0.0	
	17	1.5	1.5	
	18	4.7	4.6	
	19	1.5	1.5	
	20	1.5	1.5	
	21	1.5	1.5	
	22	4.0	4.0	
	23	4.7	4.7	
	24	1.1~1.7	1.4	
	25	0.1~0.3	1.8~2.3	
	26	0.4	1.5	
	27	4.6~4.9	4.6~4.9	
	28	3.7~4.7	3.7~4.0	
	29	4.8	4.7	
	30	4.1	4.1	
	31	4.1	4.1	
	32	4.1	4.0~4.2	
	33	0.0	0.0	
	34	4.7	4.7	
	35	3.2~3.7	3.3~3.6	
	36	0.0	0.0	
	37	3.5	3.3~3.6	
	38	4.7	4.7	
	39	4.7	4.7	
	40	0.3~0.5	0.3~0.5	
	41	0.0	0.3~0.5	
	42	0.0	0.1	
	43	0.0	0.0	
	44	1.5	1.5	
	45	1.5	1.5	
	46	1.5	1.5	
	47	4.7	4.7	
	48	1.5	1.5	
	49	0.0	1.5	
	50	0.0	0.0	
	51	0.0	0.0	
	52	1.5	1.5	

Unit [V]

Ref. No.	Pin	STBY	TALK	Note
IC2	1	0~4.9	4.9	DATA
	2	4.9	4.9	
	3	4.9	0.1	
	4	0.0	0.0	
	5	0.0	0.0	
	6	0.0	0.0	
	7	0.0	0.0	
	8	0.0	0.0	
	9	0.0	0.0	
	10	0.0	0.0	
	11	0.0	0.0	
	12	0.0	0.0	
	13	0.0	0.0	
	14	2.0~3.6	2.0~3.6	
	15	2.0~3.1	2.0~3.2	
	16	0.0	0.0	
	17	4.9	4.9	
	18	4.9	0.0	
	19	0.0	0.0	
	20	0.0	0.0	
	21	4.7	0.1	
	22	4.9	4.8	
	23	4.7	4.7	
	24	0.0	0.0	
	25	0.0	0.0	
	26	0.0	0.0	
	27	4.9	4.7	
	28	4.9	4.7	
	29	0.0	0.1	
	30	0.0	4.7	
	31	0.0	4.9	
	32	4.7	4.7	
	33	0~4.7	4.7	DATA
	34	4.7	0.1	
	35	0.0	0.0	
	36	0.1	0.1	
	37	0.0	0.0	
	38	4.9	4.9	
	39	0.0	0.0	
	40	4.3	0.1	
	41	0.0	4.9	
	42	0.0~4.9	0.0	
	43	0.0~4.9	0.0	
	44	0.0~4.9	0.0	
IC3	1	0.0	0.0	
	2	0.0	0.0	
	3	0.0	0.0	
	4	5.0	5.0	
IC4	1	4.7	4.7	
	2	4.7	4.7	
	3	0.0	0.0	

IC'S

Unit [V]

Ref. No.	Pin	STBY	TALK	Note
IC5	1	4.7	4.7	
	2	4.7	4.6	
	3	0.0	0.0	
	4	0.0	0.0	
	5	0.0	0.0	
	6	0.0	0.0	
	7	0.0	0.0	
	8	0.0	0.0	
	9	-0.8~0.9	-0.8~0.9	
	10	4.7	4.7	
	11	0.0	0.0	
	12	0.0	0.0	
	13	0.0	0.0	
	14	0.0	0.0	
	15	0.0	0.0	
	16	0.0	0.0	
	17	0.0	0.0	
	18	0.0	0.0	
	19	0.0	0.0	
	20	2.1	2.1	
IC101	1	2.3	2.3	
	2	2.4	2.3	
	3	2.4	2.3	
	4	2.4	2.3	
	5	2.4	2.3	
	6	0.0	0.0	
	7	0.0	0.0	
	8	0.0	0.0	
	9	0.0	0.0	
	10	1.4~3.2	3.2~1.4	
	11	0.6~3.4	0.0	
	12	0.0	0.0	
	13	0.0	0.0	
	14	0.0	0.0	
	15	0.0	0.0	
	16	4.7	4.7	
	17	4.7	4.7	
	18	4.7	4.7	
	19	4.7	0.0	
	20	0.0	0.0	
	21	0.0	0.0	
	22	0.0	0.0	
	23	0.0	0.0	
	24	4.7	4.7	
IC103	1	0.0	0.0	
	2	0.0	0.0	
	3	0.0	0.0	
	4	0.5	0.5	
IC501	1	0.0	0.0	
	2	0.0	0.0	
	3	0.0	0.0	
	4	0.0	0.0	

Unit [V]

Ref. No.	Pin	STBY	TALK	Note
IC501	5	3.3	3.2	
	6	0.0	3.2	
	7	0.0	0.0	
	8	3.3	3.3	
IC502	1	3.3	3.3	
	2	3.3	3.3	
	3	0.0	0.0	
IC503	1	3.3	3.3	
	2	0.0	0.0	
	3	0.0	0.0	
	4	0.0	0.0	
	5	0.0	0.0	
	6	0.0	0.0	
	7	0.0	0.0	
	8	0.0	0.0	
	9	0.0	0.0	
	10	0.0	0.0	
	11	3.3	3.3	
	12	0.0	0.0	
	13	0.0	0.0	
	14	3.3	3.3	
	15	1.1~3.2	3.2	
	16	0.0	0.0	
	17	3.3	3.3	
	18	0.0	0.0	
	19	3.3	3.2	
	20	0.0	0.0	
	21	0.0	0.0	
	22	0.0~3.0	-0.1~3.0	
	23	-0.1~3.0	-0.1~3.4	
	24	0.0	0.0	
	25	0.0	0.0	
	26	0.0	0.0	
	27	0.0	0.0	
	28	0.0	0.0	
	29	0.0	0.0	
	30	0.0	0.0	
	31	0.0	0.0	
	32	0.0	3.3	
	33	3.3	3.3	
	34	1.1~3.3	3.3	
	35	0.0~3.2	0.0	
	36	0.0	0.0	
	37	0.0	0.1	
	38	0.0~3.2	0.0	
	39	0.0	1.3	
	40	0.0~3.2	0.0	
	41	2.8~3.3	0.0	
	42	0.0~3.3	0.0	
	43	0.0	0.0	
	44	0.0~3.2	0.1~3.2	DATA
	45	0.0~3.2	3.2	
	46	0.0	0.0	

Unit [V]

Ref. No.	Pin	STBY	TALK	Note
IC503	47	0.0	0.0	
	48	0.0	0.0	
	49	0.0	0.0	
	50	0.0~2.7	0.0	
	51	0.0	0.0	
	52	0.0	0.0~3.3	DATA
	53	0.0	0.0~3.3	DATA
	54	0.0	0.0~3.2	DATA
	55	0.0	0.0~3.2	DATA
	56	3.3	3.3	
	57	3.3	0.0~3.2	DATA
	58	0.0	0.0	
	59	0.0	0.0~3.2	DATA
	60	3.3	0.0	
	61	0.0	0.0~3.2	DATA
	62	3.3	3.3	
63	3.3	3.3		
64	3.3	3.3		
IC504	1	0.0~2.6	0.3~2.5	
	2	0.0~2.6	0.4~2.7	
	3	0.0~2.8	1.5	
	4	0.0~3.2	1.2	
	5	0.0~3.3	3.2	
	6	0.1	1.3~2.7	
	7	0.0	0.0	
	8	0.0~3.3	3.0~3.6	
	9	0.0~3.3	0.1	
	10	0.0~3.2	0.1	
	11	0.0~3.2	0.1	
	12	0.0	0.0	
	13	0.0~3.2	0.0	
	14	0.0	0.0	
	15	0.0~3.2	0.0~3.2	DATA
	16	0.0~3.3	3.2	
	17	0.0	1.5	
	18	0.0~3.3	3.2	
	19	0.0	1.5	
	20	0.0	1.5	
	21	0.0	1.5	
	22	0.1~1.8	2.5	
	23	0.0~3.3	3.3	
	24	0.0	1.5	
	25	-0.1~2.2	0.8~1.4	
	26	0.0~0.5	0.9	
	27	0.0~3.4	3.0~3.4	
	28	0.0~2.6	2.1~2.6	
	29	0.0~3.3	3.3	
	30	0.0~2.6	2.6	
	31	0.0~2.6	2.6	
	32	0.0~2.6	2.6	
	33	0.0	0.1	
	34	0.0~3.3	3.2	

Unit [V]

Ref. No.	Pin	STBY	TALK	Note
IC504	35	0.0	2.0	
	36	0.0	0.1	
	37	0.0	1.8~2.0	
	38	0.0~3.3	3.2	
	39	0.0~3.3	3.3	
	40	0.0~0.7	0.3~0.6	
	41	0.0~0.7	0.3~0.6	
	42	0.0~3.0	1.3	
	43	0.0	0.0	
	44	0.0	1.5	
	45	0.0	1.5	
	46	0.0	1.5	
	47	0.0~3.3	3.2	
	48	0.0~0.3	1.5	
	49	0.0~0.3	1.5	
	50	0.0~1.6	1.6	
51	0.0	0.0		
52	0.0~1.5	1.5		
IC505	1	0.0	0.0	
	2	3.6	3.6	
	3	3.3	3.3	
	4	2.9~3.4	2.9	
	5	0.0	0.0	

SEMICONDUCTOR LEAD IDENTIFICATION

Base Unit

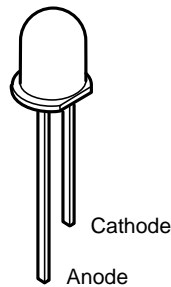
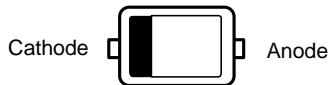
D1: HZ7C3
 D4: HZ6C3
 D5/D7/D8/D101/D102/
 D103/D104: 1N4148
 D109: HZ33CP

D2/D6/D105/D106/D107/
 D108/D110/D111: RLS4148



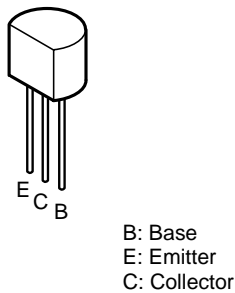
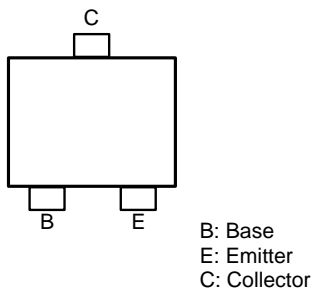
D3: KV1832C

D9/D10: LTL-16KPE-A
 D11: LTL-16KGE-A

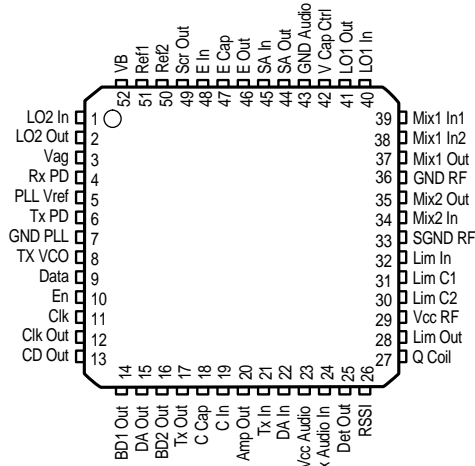


Q1/Q3/Q4: 2SC2714-Y
 Q2/Q5/Q6/Q8/Q9/Q11: 2SC2712-GR
 Q12/Q13/Q14/Q15/Q16: 2SA1162-G

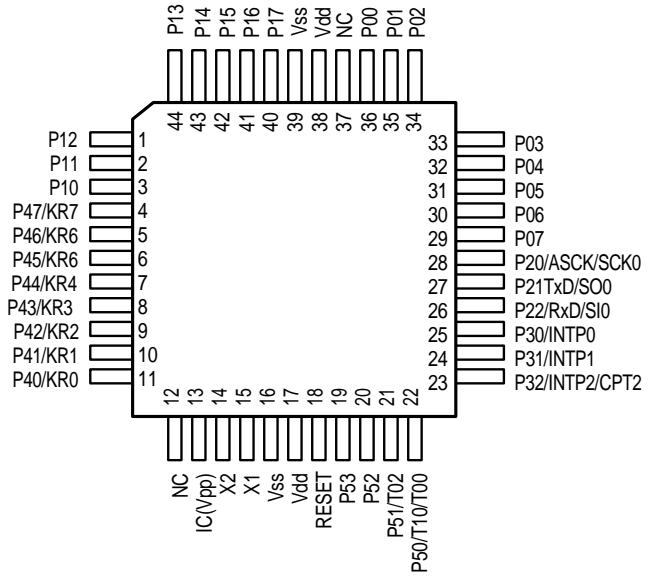
Q7: 2SC2120-Y
 Q10: 2SC1815-Y



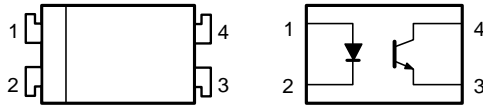
IC1
MC13111FB



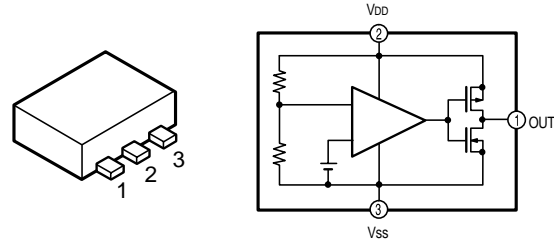
IC2
 μ PD789026



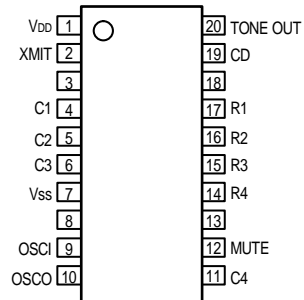
IC3/IC103
PC817



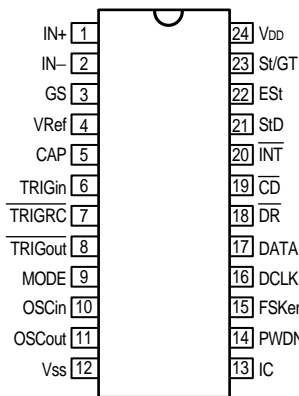
IC4 RH5VL40CA



IC5
LC7366NM

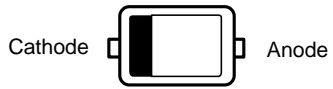


IC101
MT88E43



Handset

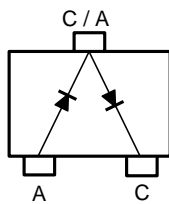
D501: KV1832C



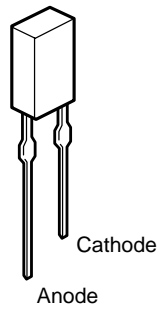
D502: 1N4148
D503/D510: HZ6C3



D504: 1SS226



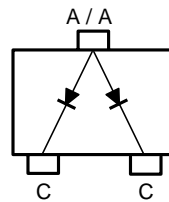
D505/D507: PG3822K



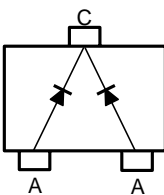
D506: RLS4148



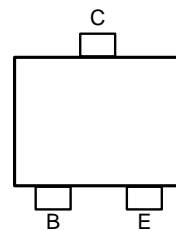
D508//D509: HSM88WA



D511: DCB010

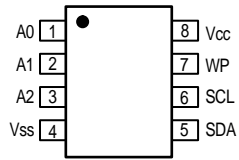


Q501/Q504/Q505: 2SC2714-Y
Q502/Q511/Q512/Q514/Q515/Q516: 2SC2712-GR
Q503/Q506/Q507/Q508/Q509/Q510/Q513: 2SA1162-G

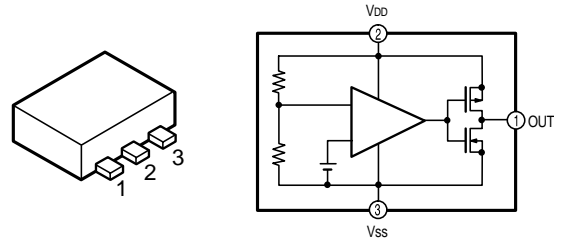


B: Base
E: Emitter
C: Collector

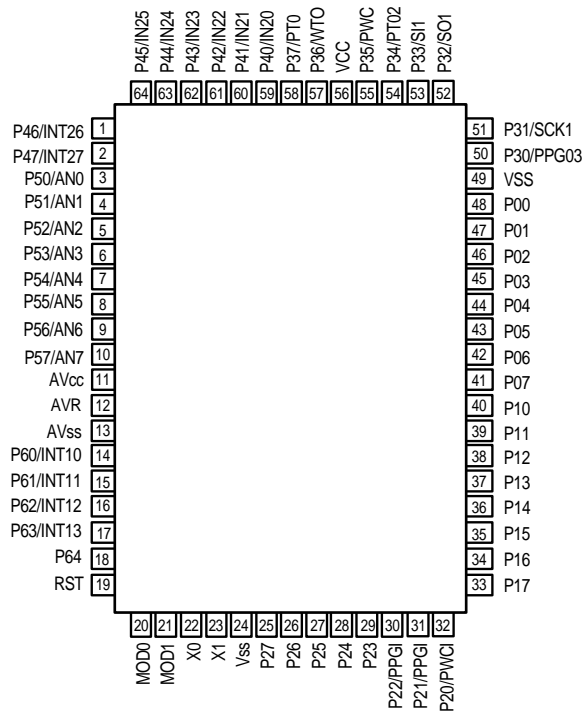
IC501 24LC16BT/SN



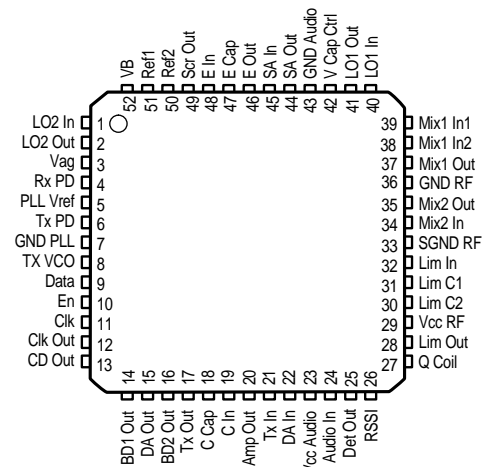
IC502 RH5VL28CA



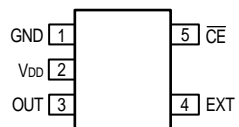
IC503
MB89627R



IC504
MC13111FB

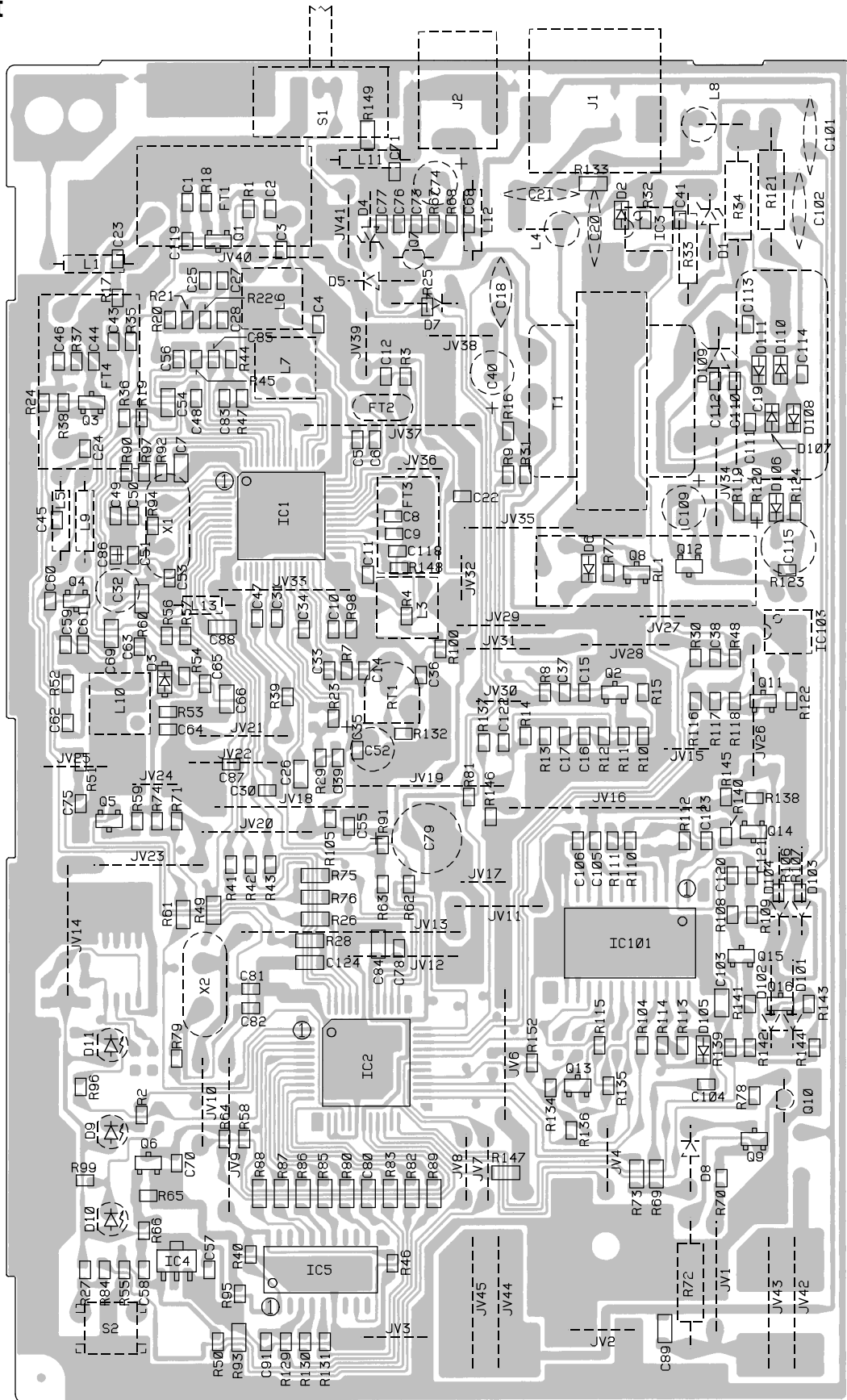


IC505
RN5RF33AA

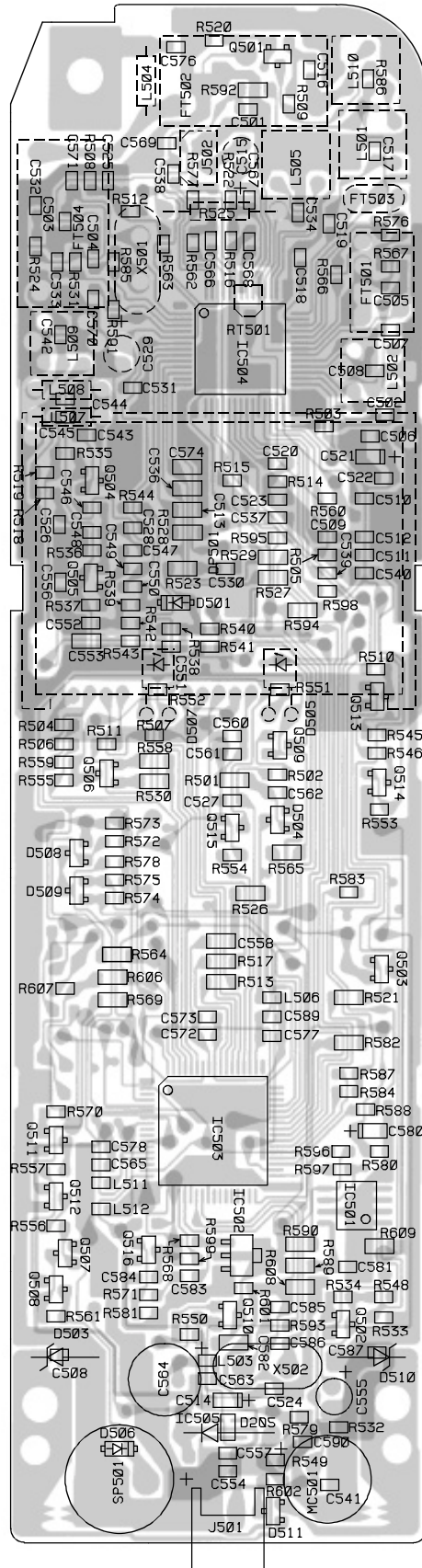


ELECTRICAL PARTS LOCATION

Base Unit
Main PCB

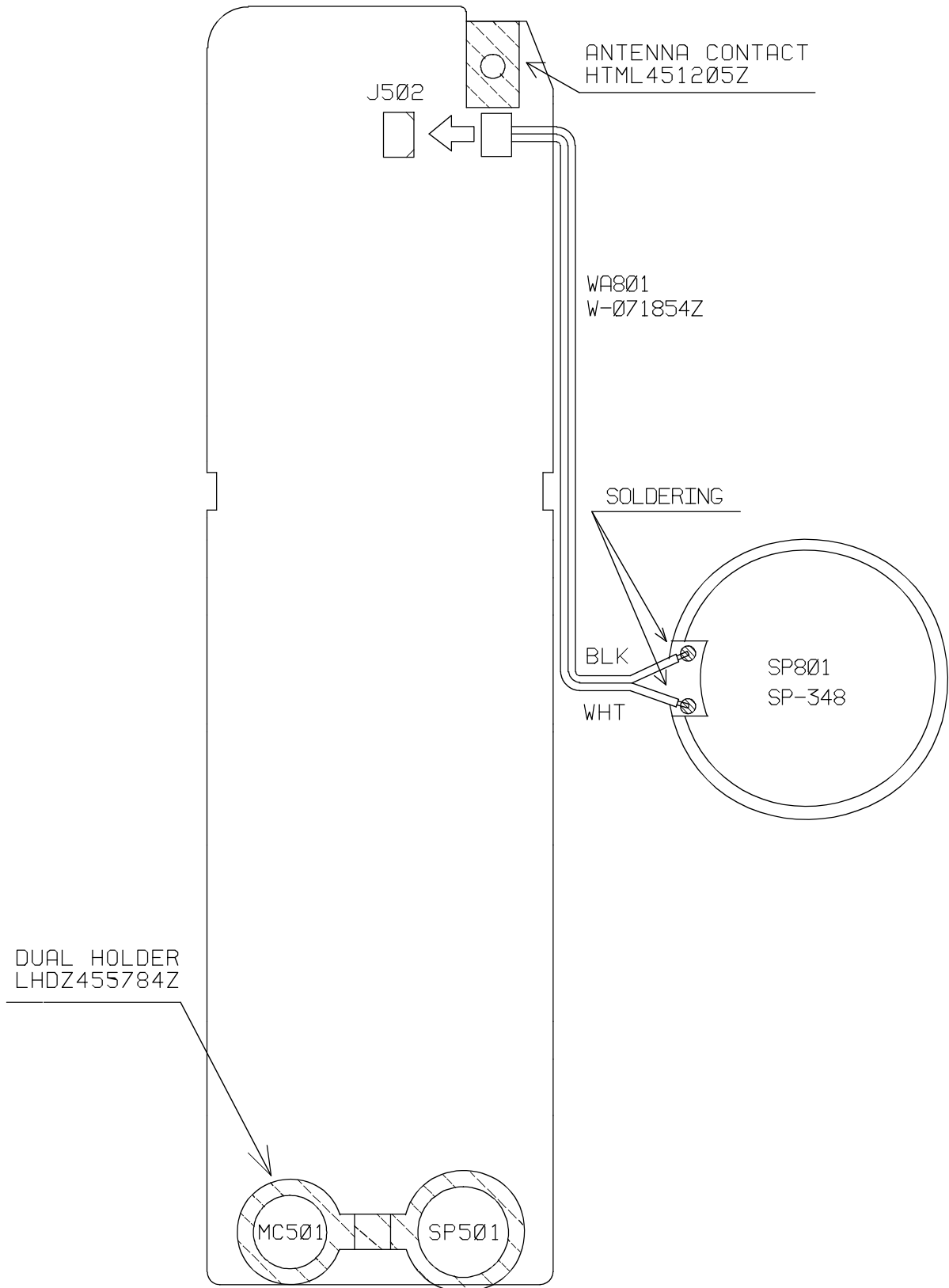


Handset Main PCB



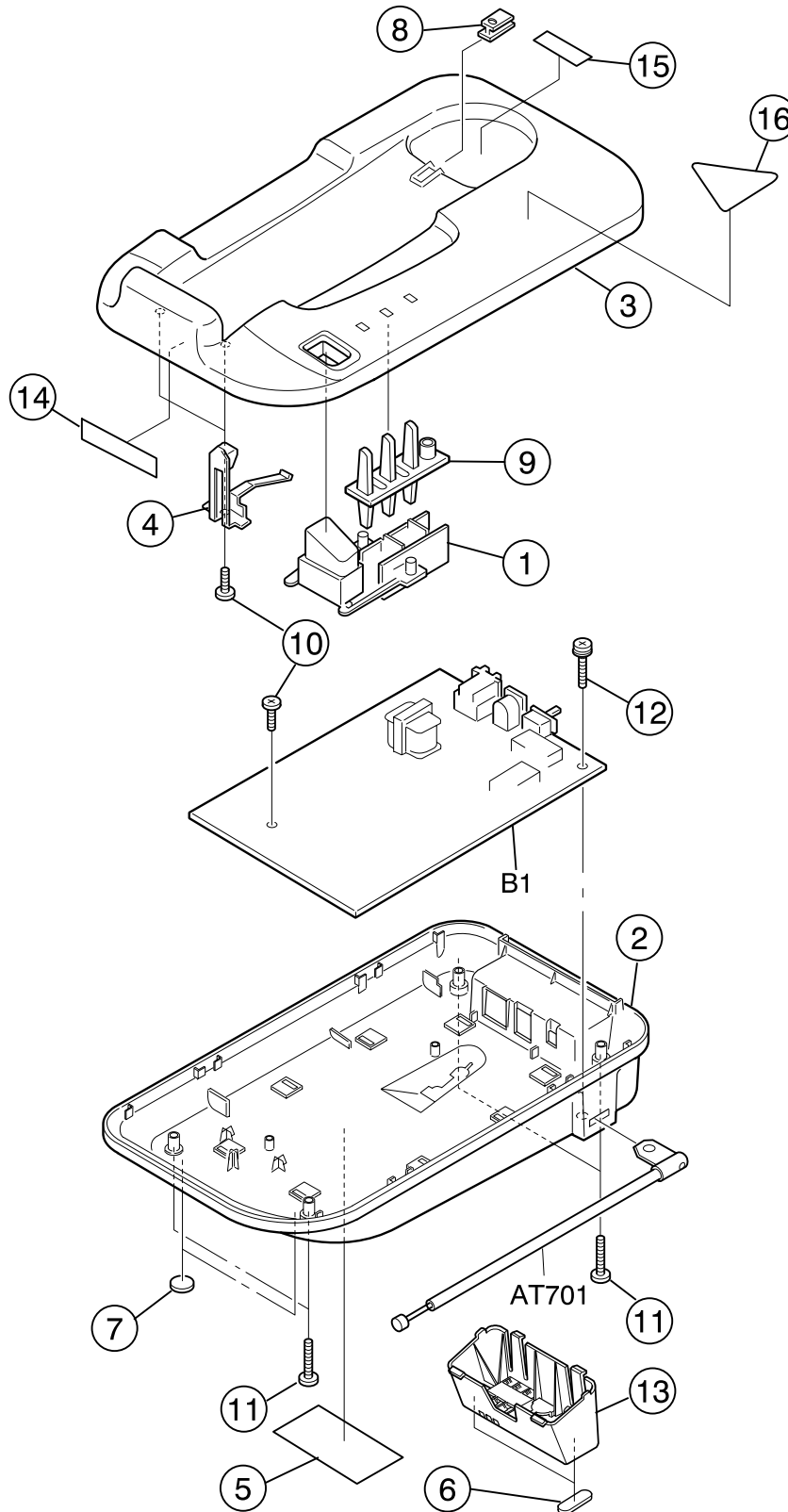
WIRING DIAGRAM

Handset



EXPLODED VIEW AND MECHANICAL PARTS LIST

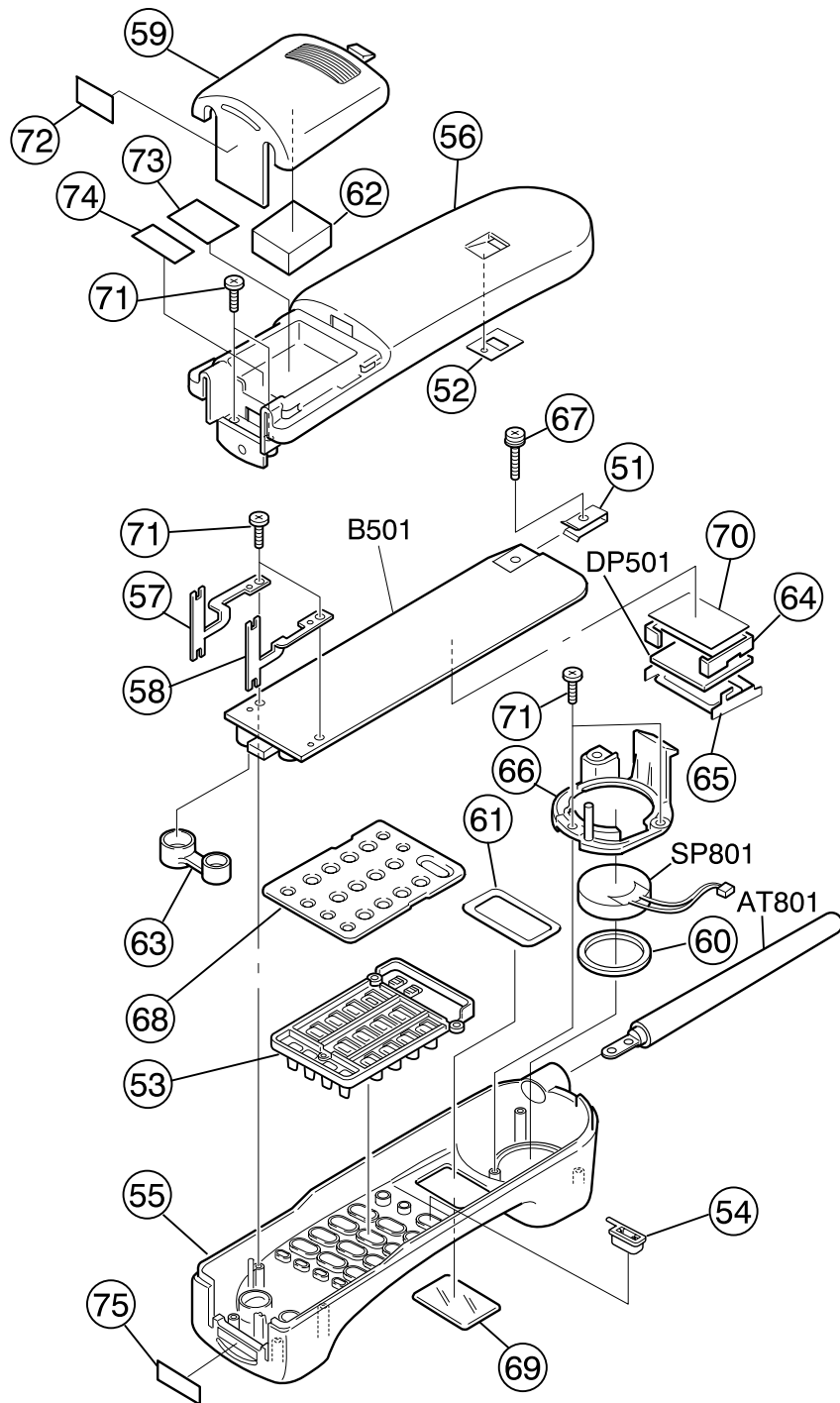
Base Unit



Base Unit

LOC. NO.	PART NO.	REF. NO.	DESCRIPTION	QTY
1	RC005527	GNBZ356907Z	Button, Push ABS	1
2	RC005523	GCAS356903Z	Case, Bottom ABS	1
3	RC005522	GCAS156902Z	Case, Top ABS	1
4	RC005665	HTML457208Z	Charge Terminal (Comp) C5191(PBP)	2
5	RC008796	PLBS458442Z	Label, ID	1
6	RC005532	RCLR419970Z	Cushion Bumpon	2
7	RC002384	LFUT428079Z	Foot Bumpon SJ-5916 1.6T	2
8	RC005526	GCAS456906Z	Hook ABS	1
9	RC005525	GCAS456905Z	LED Lens PMMA	1
10	RC000941	SSCW802608N	Screw, P Tight Bind HD + D2.6X8 NI	3
11	RC004028	SSCW802616N	Screw, P Tight Bind HD + D2.6X16 NI	4
12	RC001752	SSCW283012N	Screw, Tapping Bind+& SP Washer D3X12 NI	1
13	RC005524	GCAS356904Z	Desk Top/Wall Mount Bracket ABS	1
14	RC005533	RUTC457141Z	Wool Coated Paper, Wool Tack	1
15	RC005180	PLBZ456717Z	Label, Indication	1
16	RC005531	PLBZ457408Z	Label, Indication	1

Handset



Handset

LOC. NO.	PART NO.	REF. NO.	DESCRIPTION	QTY	
51	RC004280	HTML451205Z	Antenna Contact	C5191(PBP)	1
52	RC005561	RBLD456730Z	Blind	PVC	1
53	RC005551	GNBZ356911Z	Button, Function	ABS	1
54	RC005552	GNBZ456912Z	Button, Push	ABS	1
55	RC005547	GCAS156908Z	Case, Front	ABS	1
56	RC005548	GCAS356909Z	Case, Rear	ABS	1
57	RC005671	HTML457209Z	Chage Terminal	C2680(BSP)	1
58	RC005672	HTML457210Z	Charge Terminal	C2680(BSP)	1
59	RC005549	GCAS356910Z	Case, Battery	ABS	1
60	RC004286	RCUN451209Z	Cushion	Neoprene	1
61	RC005562	RCUN454106Z	Cushion	Neoprene	1
62	RC004687	RCUM441420A	Cushion Batt	Moltprene, Nitto #500	1
63	RC005556	LHDZ455784Z	Dual Holder	EPDM	1
64	RC005544	GHDZ456417Z	Holder, Display	PC	1
65	RC005545	HHDZ456419Z	Holder, Display	SPTTE	1
66	RC005550	GHDZ356415Z	Holder, Speaker	ABS	1
67	RC003990	SSCW282616N	Screw, Tapping Bind +&SP Washer	D2.6X16 NI	1
68	RC005557	LNBZ356400Z	Key Rubber	SI	1
69	RC005555	KDPZ456988Z	Plate, Didplay	PMMA	1
70	RC005546	RETC456608Z	Reflection Sheet		1
71	RC000941	SSCW802608N	Screw, P Tight Bind HD +	D2.6X8 NI	6
72	RC004285	PLBZ451727Z	Label, Caution	Paper	1
73	RC005560	PLBZ457411Z	Label, Caution		1
74	RC008803	PLBS458443Z	Label, ID		1
75	RC005559	PLBS457410Z	Label, ID		1

PARTS LIST

PRODUCT SAFETY NOTE: Products marked with a Δ have special characteristics important to safety. Before replacing any of these components, read carefully the product safety notice of this service manual. Don't degrade the safety of the product through important servicing.

Symbol	F	G	J	K	M	N	Z	P	Symbol	C	D
%	±1	±2	±5	±10	±20	±30	-20+80	0+100	pF	±0.25	±0.5

LOC. NO.	PART NO.	REF NO.	DESCRIPTION
CAPACITORS			
The following codes indicate variation of capacitors against temperatures,:			
YA = ±5%, YB = ±10%, YD = +20 -30%, YE = +20 -50% (-25 ~ +85 °C), ZF = +30 -80%, (-10 ~ +79 °C),			
CH = 0 ±60 ppm/°C, TH = -470 ppm/°C, ±60 ppm/°C, B = ±10%, F = +30 -80%,			
SL = +350 ppm/°C ~ -1000 ppm/°C, UJ = -750 ppm/°C ±120 ppm/°C, CJ = 0 ± 120 ppm/°C, CK = 0 ± 250 ppm/°C			
C1	RC004741	BCUP811040Z	CERAMIC 0.1UF 50V Z F
C2	RC004497	BCUB811035Z	CERAMIC 0.01UF 50V K B
C3	RC004736	BCUA811214Z	CERAMIC 120PF 50V J CH
C4	RC004477	BCUA811002Z	CERAMIC 10PF 50V D CH
C5	RC004496	BCUB811025Z	CERAMIC 0.001UF 50V K B
C6	RC004497	BCUB811035Z	CERAMIC 0.01UF 50V K B
C7	RC004508	BCXC311050Z	CERAMIC 1UF 16V Z F
C8	RC004494	BCUB511045Z	CERAMIC 0.1UF 25V K B
C9	RC004494	BCUB511045Z	CERAMIC 0.1UF 25V K B
C10	RC004502	BCUB814735Z	CERAMIC 0.047UF 50V K B
C11	RC004477	BCUA811002Z	CERAMIC 10PF 50V D CH
C12	RC004741	BCUP811040Z	CERAMIC 0.1UF 50V Z F
C14	RC004739	BCUB813335Z	CERAMIC 0.033UF 50V K B
C15	RC004498	BCUB811535Z	CERAMIC 0.015UF 50V K B
C16	RC004494	BCUB511045Z	CERAMIC 0.1UF 25V K B
C17	RC004494	BCUB511045Z	CERAMIC 0.1UF 25V K B
C18	RC000777	BCZY0120001	SEMI-CONDUCTOR 0.022UF 18V CZ-120
C19	RC003189	BCQL521055Z	MYLAR 1UF 250V K C-167
C20	RC000752	BCKB821025Z	CERAMIC 0.001UF 500V K YB(B)
C21	RC004411	BCKB824715A	CERAMIC 470PF 500V K B C-080
C22	RC004741	BCUP811040Z	CERAMIC 0.1UF 50V Z F
C23	RC004496	BCUB811025Z	CERAMIC 0.001UF 50V K B
C24	RC004496	BCUB811025Z	CERAMIC 0.001UF 50V K B
C25	RC004573	BCUB816825Z	CERAMIC 0.0068UF 50V K B
C26	RC004960	BCXC514740Z	CERAMIC 0.47UF 25V Z F
C27	RC004494	BCUB511045Z	CERAMIC 0.1UF 25V K B
C28	RC004562	BCUB814725Z	CERAMIC 0.0047UF 50V K B
C30	RC004496	BCUB811025Z	CERAMIC 0.001UF 50V K B
C31	RC004494	BCUB511045Z	CERAMIC 0.1UF 25V K B
C32	RC004951	BCAP811006Z	ELECTROLYTIC 10UF 50V M C-130
C33	RC004497	BCUB811035Z	CERAMIC 0.01UF 50V K B
C34	RC004608	BCUB312245Z	CERAMIC 0.22UF 16V K B
C35	RC004741	BCUP811040Z	CERAMIC 0.1UF 50V Z F

LOC. NO.	PART NO.	REF NO.	DESCRIPTION
C36	RC004492	BCUA818204Z	CERAMIC 82PF 50V J CH
C37	RC004608	BCUB312245Z	CERAMIC 0.22UF 16V K B
C38	RC004500	BCUB812235Z	CERAMIC 0.022UF 50V K B
C39	RC004561	BCUB813935Z	CERAMIC 0.039UF 50V K B
C40	RC004945	BCAP111016Z	ELECTROLYTIC 100UF 10V M C-130
C41	RC004562	RCUB814725Z	CERAMIC 0.0047UF 50V K B
C43	RC004497	BCUB811035Z	CERAMIC 0.01UF 50V K B
C44	RC004487	BCUA814704Z	CERAMIC 47PF 50V J CH
C45	RC004490	BCUA816092Z	CERAMIC 6PF 50V D CH
C46	RC004496	BCUB811025Z	CERAMIC 0.001UF 50V K B
C47	RC004560	BCUB813325Z	CERAMIC 0.0033UF 50V K B
C48	RC004494	BCUB511045Z	CERAMIC 0.1UF 25V K B
C49	RC004741	BCUP811040Z	CERAMIC 0.1UF 50V Z F
C50	RC004482	BCUA812204Z	CERAMIC 22PF 50V J CH
C51	RC004485	BCUA813304Z	CERAMIC 33PF 50V J CH
C52	RC004951	BCAP811006Z	ELECTROLYTIC 10UF 50V M C-130
C53	RC004741	BCUP811040Z	CERAMIC 0.1UF 50V Z F
C54	RC004960	BCXC514740Z	CERAMIC 0.47UF 25V Z F
C55	RC004741	BCUP811040Z	CERAMIC 0.1UF 50V Z F
C56	RC004737	BCUA815614Z	CERAMIC 560PF 50V J CH
C57	RC004500	BCUB812235Z	CERAMIC 0.022UF 50V K B
C58	RC004562	BCUB814725Z	CERAMIC 0.0047UF 50V K B
C59	RC004497	BCUB811035Z	CERAMIC 0.01UF 50V K B
C60	RC004479	BCUA811204Z	CERAMIC 12PF 50V J CH
C61	RC004478	BCUA811014Z	CERAMIC 100PF 50V J CH
C62	RC004482	BCUA812204Z	CERAMIC 22PF 50V J CH
C63	RC005388	BCUA813904Z	CERAMIC 39PF 50V J CH
C64	RC004496	BCUB811025Z	CERAMIC 0.001UF 50V K B
C65	RC004502	BCUB814735Z	CERAMIC 0.047UF 50V K B
C66	RC005514	BCXB311055Z	CERAMIC 1UF 16V K B
C68	RC004489	BCUA815091Z	CERAMIC 5PF 50V C CH
C69	RC005513	BCXA811514Z	CERAMIC 150PF 50V J CH
C70	RC004496	BCUB811025Z	CERAMIC 0.001UF 50V K B
C71	RC004489	BCUA815091Z	CERAMIC 5PF 50V C CH
C73	RC004494	BCUB511045Z	CERAMIC 0.1UF 25V K B
C74	RC00494	BCAP314706Z	ELECTROLYTIC 47UF 16V M C-130
C75	RC004496	BCUB811025Z	CERAMIC 0.001UF 50V K B
C76	RC004497	BCUB811035Z	CERAMIC 0.01UF 50V K B
C77	RC004741	BCUP811040Z	CERAMIC 0.1UF 50V Z F
C78	RC004497	BCUB811035Z	CERAMIC 0.01UF 50V K B
C79	RC005160	BCAP113316Z	ELECTROLYTIC 330UF 10V M C-130
C80	RC004659	BCXB811025Z	CERAMIC 0.001UF 50V K B
C81	RC004482	BCUA812204Z	CERAMIC 22PF 50V J CH
C82	RC004482	BCUA812204Z	CERAMIC 22PF 50V J CH
C83	RC004478	BCUA811014Z	CERAMIC 100PF 50V J CH
C84	RC004508	BCXC311050Z	CERAMIC 1UF 16V Z F

LOC. NO.	PART NO.	REF NO.	DESCRIPTION
C85	RC004500	BCUB812235Z	CERAMIC 0.022UF 50V K B
C86	RC004740	BCUE813091Z	CERAMIC 3PF 50V C CJ
C87	RC004496	BCUB811025Z	CERAMIC 0.001UF 50V K B
C88	RC004659	BCXB811025Z	CERAMIC 0.001UF 50V K B
C89	RC004659	BCXB811025Z	CERAMIC 0.001UF 50V K B
C91	RC004497	BCUB811035Z	CERAMIC 0.01UF 50V K B
C101	RC005512	BCKB131025Z	CERAMIC 0.001UF 1000V K YB(B)
C102	RC005512	BCKB131025Z	CERAMIC 0.001UF 1000V K YB(B)
C103	RC004508	BCXC311050Z	CERAMIC 1UF 16V Z F
C104	RC004559	BCUB311545Z	CERAMIC 0.15UF 16V K B
C105	RC004741	BCUP811040Z	CERAMIC 0.1UF 50V Z F
C106	RC004496	BCUB811025Z	CERAMIC 0.001UF 50V K B
C109	RC004952	BCAP811096Z	ELECTROLYTIC 1UF 50V M C-130
C110	RC004562	BCUB814725Z	CERAMIC 0.0047UF 50V K B
C111	RC004562	BCUB814725Z	CERAMIC 0.0047UF 50V K B
C112	RC004496	BCUB811025Z	CERAMIC 0.001UF 50V K B
C113	RC004562	BCUB814725Z	CERAMIC 0.0047UF 50V K B
C114	RC004562	BCUB814725Z	CERAMIC 0.0047UF 50V K B
C115	RC004948	BCAP511016Z	ELECTROLYTIC 100UF 25V M C-130
C118	RC004737	BCUA815614Z	CERAMIC 560PF 50V J CH
C119	RC005182	BCUA817092Z	CERAMIC 7PF 50V D CH
C120	RC004494	BCUB511045Z	CERAMIC 0.1UF 25V K B
C121	RC004494	BCUB511045Z	CERAMIC 0.1UF 25V K B
C122	RC004562	BCUB814725Z	CERAMIC 0.0047UF 50V K B
C123	RC004500	BCUB812235Z	CERAMIC 0.022UF 50V K B
C124	RC004508	BCXC311050Z	CERAMIC 1UF 16V Z F
C501	RC004497	BCUB811035Z	CERAMIC 0.01UF 50V K B
C502	RC004477	BCUA811002Z	CERAMIC 10PF 50V D CH
C503	RC004482	BCUA812204Z	CERAMIC 22PF 50V J CH
C504	RC004484	BCUA812704Z	CERAMIC 27PF 50V J CH
C505	RC004497	BCUB811035Z	CERAMIC 0.01UF 50V K B
C506	RC004502C	BCUB814735Z	CERAMIC 0.047UF 50V K B
C507	RC004502	BCUB814735Z	CERAMIC 0.047UF 50V K B
C508	RC004502	BCUB814735Z	CERAMIC 0.047UF 50V K B
C509	RC004500	BCUB812235Z	CERAMIC 0.022UF 50V K B
C510	RC004502	BCUB814735Z	CERAMIC 0.047UF 50V K B
C511	RC004739	BCUB813335Z	CERAMIC 0.033UF 50V K B
C512	RC004956	BCUA811814Z	CERAMIC 180PF 50V J CH
C513	RC004659	BCXB811025Z	CERAMIC 0.001UF 50V K B
C514	RC004185	BCSS951006Z	TANTALUM CHIP 10UF 7V M A C-241
C515	RC001045	BCEQ311006Z	ELECTROLYTIC 10UF 16V M C-125
C516	RC004747	BCUA813314Z	CERAMIC 330PF 50V J CH
C517	RC004478	BCUA811014Z	CERAMIC 100PF 50V J CH
C518	RC004500	BCUB812235Z	CERAMIC 0.022UF 50V K B
C519	RC004496	BCUB811025Z	CERAMIC 0.001UF 50V K B
C520	RC004502	BCUB814735Z	CERAMIC 0.047UF 50V K B

LOC. NO.	PART NO.	REF NO.	DESCRIPTION
C521	RC004185	BCSS951006Z	TANTALUM CHIP 10UF 7V M A C-241
C522	RC004497	BCUB811035Z	CERAMIC 0.01UF 50V K B
C523	RC004491	BCUA816804Z	CERAMIC 68PF 50V J CH
C524	RC004488	BCUA814714Z	CERAMIC 470PF 50V J CH
C525	RC004502	BCUB814735Z	CERAMIC 0.047UF 50V K B
C526	RC004497	BCUB811035Z	CERAMIC 0.01UF 50V K B
C527	RC004497	BCUB811035Z	CERAMIC 0.01UF 50V K B
C528	RC004481	BCUA811514Z	CERAMIC 150PF 50V J CH
C529	RC001045	BCEQ311006Z	ELECTROLYTIC 10UF 16V M C-125
C530	RC004497	BCUB811035Z	CERAMIC 0.01UF 50V K B
C531	RC004497	BCUB811035Z	CERAMIC 0.01UF 50V K B
C532	RC004494	BCUB511045Z	CERAMIC 0.1UF 25V K B
C533	RC004573	BCUB816825Z	CERAMIC 0.0068UF 50V K B
C534	RC004562	BCUB814725Z	CERAMIC 0.0047UF 50V K B
C536	RC004659	BCXB811025Z	CERAMIC 0.001UF 50V K B
C537	RC004564	BCUP514740Z	CERAMIC 0.47UF 25V Z F
C538	RC004564	BCUP514740Z	CERAMIC 0.47UF 25V Z F
C539	RC004608	BCUB312245Z	CERAMIC 0.22UF 16V K B
C540	RC005165	BCUB811235Z	CERAMIC 0.012UF 50V K B
C541	RC005667	BCUB811835Z	CERAMIC 0.018UF 50V K B
C542	RC004496	BCUB811025Z	CERAMIC 0.001UF 50V K B
C543	RC004485	BCUA813304Z	CERAMIC 33PF 50V J CH
C544	RC004497	BCUB811035Z	CERAMIC 0.01UF 50V K B
C545	RC004496	BCUB811025Z	CERAMIC 0.001UF 50V K B
C546	RC004558	BCUA811804Z	CERAMIC 18PF 50V J CH
C547	RC004478	BCUA811014Z	CERAMIC 100PF 50V J CH
C548	RC004487	BCUA814704Z	CERAMIC 47PF 50V J CH
C549	RC004477	BCUA811002Z	CERAMIC 10PF 50V D CH
C550	RC004558	BCUA811804Z	CERAMIC 18PF 50V J CH
C551	RC004496	BCUB811025Z	CERAMIC 0.001UF 50V K B
C552	RC004502	BCUB814735Z	CERAMIC 0.047UF 50V K B
C553	RC005514	BCXB311055Z	CERAMIC 1UF 16V K B
C554	RC005166	BCUP311050Z	CERAMIC 1UF 16V Z F
C555	RC004657	BCEQ514796Z	ELECTROLYTIC 4.7UF 25V M C-125
C556	RC004497	BCUB811035Z	CERAMIC 0.01UF 50V K B
C557	RC004497	BCUB811035Z	CERAMIC 0.01UF 50V K B
C558	RC004504	BCXB511045Z	CERAMIC 0.1UF 25V K B
C560	RC004741	BCUP811040Z	CERAMIC 0.1UF 50V Z F
C561	RC004747	BCUA813314Z	CERAMIC 330PF 50V J CH
C562	RC004494	BCUB511045Z	CERAMIC 0.1UF 25V K B
C563	RC004741	BCUP811040Z	CERAMIC 0.1UF 50V Z F
C564	RC008797	BCDU903316Z	ELECTROLYTIC 330UF 6.3V M C-308
C565	RC004741	BCUP811040Z	CERAMIC 0.1UF 50V Z F
C566	RC004494	BCUB511045Z	CERAMIC 0.1UF 25V K B
C567	RC005134	BCUA812714Z	CERAMIC 270PF 50V J CH
C568	RC004497	BCUB811035Z	CERAMIC 0.01UF 50V K B

LOC. NO.	PART NO.	REF NO.	DESCRIPTION
C569	RC005166	BCUP311050Z	CERAMIC 1UF 16V Z F
C570	RC004741	BCUP811040Z	CERAMIC 0.1UF 50V Z F
C571	RC004490	BCUA816092Z	CERAMIC 6PF 50V D CH
C572	RC004496	BCUB811025Z	CERAMIC 0.001UF 50V K B
C573	RC004747	BCUA813314Z	CERAMIC 330PF 50V J CH
C574	RC004659	BCXB811025Z	CERAMIC 0.001UF 50V K B
C576	RC008841	BCUC817581Z	CERAMIC 0.75PF 50V C CK
C577	RC005166	BCUP311050Z	CERAMIC 1UF 16V Z F
C578	RC004497	BCUB811035Z	CERAMIC 0.01UF 50V K B
C580	RC003247	BCPT954796Z	TANTALUM CHIP 4.7UF 7V M A C-228
C581	RC004741	BCUP811040Z	CERAMIC 0.1UF 50V Z F
C582	RC004504	BCXB511045Z	CERAMIC 0.1UF 25V K B
C583	RC004562	BCUB814725Z	CERAMIC 0.0047UF 50V K B
C584	RC004496	BCUB811025Z	CERAMIC 0.001UF 50V K B
C585	RC004482	BCUA812204Z	CERAMIC 22PF 50V J CH
C586	RC004482	BCUA812204Z	CERAMIC 22PF 50V J CH
C587	RC004483	BCUA812214Z	CERAMIC 220PF 50V J CH
C588	RC004483	BCUA812214Z	CERAMIC 220PF 50V J CH
C589	RC004497	BCUB811035Z	CERAMIC 0.01UF 50V K B
C590	RC004497	BCUB811035Z	CERAMIC 0.01UF 50V K B
DIODES			
D1	RC002470	BDAY0492033	ZENER HZ7C3 TD
D2	RC001826	BDAY0433001	DIODE RLS4148 TE11
D3	RC005088	BDAY0943001	DIODE KV1832C-A TR
D4	RC002471	BDAY0492045	ZENER HZ6C3 TD
D5	RC002236	BDAY0246003	DIODE 1N4148 T-77
D6	RC001826	BDAY0433001	DIODE RLS4148 TE11
D7	RC002236	BDAY0246003	DIODE 1N4148 T-77
D8	RC002236	BDAY0246003	DIODE 1N4148 T-77
D9	RC004189	BDAY0866001	LED LTL-16KPE-A
D10	RC004189	BDAY0866001	LED LTL-16KPE-A
D11	RC004190	BDAY0867001	LED LTL16KGE-A
D101	RC002236	BDAY0246003	DIODE 1N4148 T-77
D102	RC002236	BDAY0246003	DIODE 1N4148 T-77
D103	RC002236	BDAY0246003	DIODE 1N4148 T-77
D104	RC002236	BDAY0246003	DIODE 1N4148 T-77
D105	RC001826	BDAY0433001	DIODE RLS4148 TE11
D106	RC001826	BDAY0433001	DIODE RLS4148 TE11
D107	RC001826	BDAY0433001	DIODE RLS4148 TE11
D108	RC001826	BDAY0433001	DIODE RLS4148 TE11
D109	RC003194	BDAY0272010	ZENER HZ33CP
D110	RC001826	BDAY0433001	DIODE RLS4148 TE11
D111	RC001826	BDAY0433001	DIODE RLS4148 TE11
D501	RC005088	BDAY0943001	DIODE KV1832C-A TR
D502	RC002236	BDAY0246003	DIODE 1N4148 T-77

LOC. NO.	PART NO.	REF NO.	DESCRIPTION	
D503	RC002471	BDAY0492045	ZENER	HZ6C3TD
D504	RC001635	BDAY0274001	DIODE	1SS226 TE85L
D505	RC005534	BDAY0931001	LED	PG3822K
D506	RC001826	BDAY0433001	DIODE	RLS4148 TE11
D507	RC005534	BDAY0931001	LED	PG3822K
D508	RC002240	BDAY0485001	DIODE	HSM88WA TL
D509	RC002240	BDAY0485001	DIODE	HSM88WA TL
D510	RC002471	BDAY0492045	ZENER	HZ6C3 TD
D511	RC002658	BDAY0423002	DIODE	DCB010 TB
FILTERS				
FT1	RC004640	BFLY0778001	BPF	FL-778 B803D-1087RX
FT2	RC002479	BFLY0048001	CERAMIC	FL-048 SFE10.7MS2-M
FT3	RC004638	BFLY0743001	CERAMIC	FL-743 LTW33-455D
FT4	RC004639	BFLY0766001	LC	FL-766 B803D-1077TX
FT501	RC004638	BFLY0743001	CERAMIC	FL-743 LTW33-455D
FT502	RC004664	BFLY0767001	LC	FL-767 SH829D-1079RX
FT503	RC002479	BFLY0048001	CERAMIC	FL-048 SFE10.7MS2-M
FT504	RC004397	BFLY0742001	FILTER	FL-742 H829D-1001TX
IC's				
IC1	RC004706	BDEY2916001	UC2181B	MC13111FB
IC2	RC008808	BDDY0722003		PD S TX
IC3	RC000802	BDEY0577001		⚠ PC817 or
	RC000802	BDEY0577001		⚠ TLP521-1
IC4	RC005075	BDEY2938003		RH5VL40CA-T1 or
	RC005075	BDEY2938003		S80740AL-A4-T1
IC5	RC005516	BDEY1058003		LC7366NM-TP-T2
IC101	RC008809	BDEY3544003		MT88E43ASR
IC103	RC000802	BDEY0577001		⚠ PC817 or
	RC000802	BDEY0577001		⚠ TLP521-1
IC501	RC008799	BDEY3181003	24LC16BT/SN	
IC502	RC005074	BDEY2937003	RH5VL28CA-T1 or	
	RC005074	BDEY2937003	S80728AL-AR-T1	
IC503	RC008798	BDDY0785001	UC2244 RPF ND	
IC504	RC004706	BDEY2916001	MC13111FB	
IC505	RC008800	BDEY3643003	RN5RF33AA-TR	
JACKS				
J1	RC003586	BJKY0803002	TEL	⚠ JK-803 A36-006-4910A 2P
J2	RC001094	BJKY0234001	JACK	JK-234 DJ13-1
J501	RC003619	BJKY0628001	JACK	JK-628 M60-02-30-134P-6
J502	RC002252	BJKY0600002	JACK	JK-600 SB20-02WS 2P
COILS				
L1	RC004249	BLZY0041229	INDUCTOR	LZ-041 2.2UH K
L3	RC004666	BLBY0523001	COIL	LB-523 L7BRE-1293Z

LOC. NO.	PART NO.	REF NO.	DESCRIPTION	
L4	RC004248	BLZY0040470	INDUCTOR	LZ-040 47UH
L5	RC003693	BLZY0041478	INDUCTOR	LZ-041 0.47UH K
L6	RC004643	BLBY1106001	COIL	LB-1106 PD600XCAS-9475RS
L7	RC004642	BLBY1105001	COIL	LB-1105 291XCAS-9471IB
L8	RC004248	BLZY0040470	INDUCTOR	LZ-040 47UH
L9	RC003693	BLZY0041478	INDUCTOR	LZ-041 0.47UH K
L10	RC004641	BLBY1104001	COIL	LB-1104 291XCAS-9472IB
L11	RC004249	BLZY0041229	INDUCTOR	LZ-041 2.2UH K
L12	RC004249	BLZY0041229	INDUCTOR	LZ-041 2.2UH K
L13	RC001769	BLZY0041101	INDUCTOR	LZ-041 100UH K
L501	RC004670	BLBY1110001	COIL	LB-1110 PD600XCAS-9550X
L502	RC004666	BLBY0523001	COIL	LB-523 L7BRE-1293Z
L503	RC005541	BLZY0080278	INDUCTOR	LZ-080 0.27UH K TAPE
L504	RC004249	BLZY0041229	INDUCTOR	LZ-041 2.2UH K
L505	RC004668	BLBY1108001	COIL	LB-1108 291XCAS-9462IB
L506	RC005541	BLZY0080278	INDUCTOR	LZ-080 0.27UH K TAPE
L507	RC004400	BLZY0041109	INDUCTOR	LZ-041 1UH K
L508	RC004401	BLZY0041398	INDUCTOR	LZ-041 0.39UH K
L509	RC005539	BLBY1134001	COIL	LB-1134 291XCAS-9656IB
L510	RC004669	BLBY1109001	COIL	LB-1109 P291XCAS-9459BY
L511	RC005541	BLZY0080278	INDUCTOR	LZ-080 0.27UH K TAPE
L512	RC005540	BLZY0080100	INDUCTOR	LZ-080 10UH K TAPE
T1	RC003234	BTFY0265001	TRANSFORMER	△ TF-265 IT-24E-1B(R295403)
TRANSISTORS				
Q1	RC002245	BDBC2714124	TRANSISTOR	DB-718 2SC2714-Y TE85L
Q2	RC001637	BDBC2712303	TRANSISTOR	DB-381 2SC2712-GR TE85L
Q3	RC002245	BDBC2714124	TRANSISTOR	DB-718 2SC2714-Y TE85L
Q4	RC002245	BDBC2714124	TRANSISTOR	DB-718 2SC2714-Y TE85L
Q5	RC001637	BDBC2712303	TRANSISTOR	DB-381 2SC2712-GR TE85L
Q6	RC001637	BDBC2712303	TRANSISTOR	DB-381 2SC2712-GR TE85L
Q7	RC000799	BDBC2120124	TRANSISTOR	DB-300 2SC2120-Y
Q8	RC001637	BDBC2712303	TRANSISTOR	DB-381 2SC2712-GR TE85L
Q9	RC001637	BDBC2712303	TRANSISTOR	DB-381 2SC2712-GR TE85L
Q10	RC000796	BDBC1815124	TRANSISTOR	DB-299 2SC1815-Y
Q11	RC001637	BDBC2712303	TRANSISTOR	DB-381 2SC2712-GR TE85L
Q12	RC001081	BDBA1162107	TRANSISTOR	DB-036 2SA1162-G(GR)TE85L
Q013	RC001081	BDBA1162107	TRANSISTOR	DB-036 2SA1162-G(GR)TE85L
Q014	RC001081	BDBA1162107	TRANSISTOR	DB-036 2SA1162-G(GR)TE85L
Q015	RC001081	BDBA1162107	TRANSISTOR	DB-036 2SA1162-G(GR)TE85L
Q016	RC001081	BDBA1162107	TRANSISTOR	DB-036 2SA1162-G(GR)TE85L
Q501	RC002245	BDBC2714124	TRANSISTOR	DB-718 2SC2714-Y TE85L
Q502	RC001637	BDBC2712303	TRANSISTOR	DB-381 2SC2712-GR TE85L
Q503	RC001081	BDBA1162107	TRANSISTOR	DB-036 2SA1162-G(GR)TE85L
Q504	RC002245	BDBC2714124	TRANSISTOR	DB-718 2SC2714-Y TE85L
Q505	RC002245	BDBC2714124	TRANSISTOR	DB-718 2SC2714-Y TE85L

LOC. NO.	PART NO.	REF NO.	DESCRIPTION	
Q506	RC001081	BDBA1162107	TRANSISTOR	DB-036 2SA1162-G(GR)TE85L
Q507	RC001081	BDBA1162107	TRANSISTOR	DB-036 2SA1162-G(GR)TE85L
Q508	RC001081	BDBA1162107	TRANSISTOR	DB-036 2SA1162-G(GR)TE85L
Q509	RC001081	BDBA1162107	TRANSISTOR	DB-036 2SA1162-G(GR)TE85L
Q510	RC001081	BDBA1162107	TRANSISTOR	DB-036 2SA1162-G(GR)TE85L
Q511	RC001637	BDBC2712303	TRANSISTOR	DB-381 2SC2712-GR TE85L
Q512	RC001637	BDBC2712303	TRANSISTOR	DB-381 2SC2712-GR TE85L
Q513	RC001081	BDBA1162107	TRANSISTOR	DB-036 2SA1162-G(GR)TE85L
Q514	RC001637	BDBC2712303	TRANSISTOR	DB-381 2SC2712-GR TE85L
Q515	RC001637	BDBC2712303	TRANSISTOR	DB-381 2SC2712-GR TE85L
Q516	RC001637	BDBC2712303	TRANSISTOR	DB-381 2SC2712-GR TE85L
RESISTORS				
R1	RC004547	BRFX016844Z	CARBON	680K 1/10W J BULK
R2	RC004512	BRFX011024Z	CARBON	1K 1/10W J BULK
R3	RC004533	BRFX013314Z	CARBON	330 1/10W J BULK
R4	RC004535	BRFX013334Z	CARBON	33K 1/10W J BULK
R7	RC004513	BRFX011034Z	CARBON	10K 1/10W J BULK
R8	RC004534	BRFX013324Z	CARBON	3.3K 1/10W J BULK
R9	RC004546	BRFX016834Z	CARBON	68K 1/10W J BULK
R10	RC004746	BRFX016804Z	CARBON	68 1/10W J BULK
R11	RC004745	BRFX015614Z	CARBON	560 1/10W J BULK
R12	RC004745	BRFX015614Z	CARBON	560 1/10W J BULK
R13	RC004548	BRFX018224Z	CARBON	8.2K 1/10W J BULK
R14	RC004548	BRFX018224Z	CARBON	8.2K 1/10W J BULK
R15	RC004546	BRFX016834Z	CARBON	68K 1/10W J BULK
R16	RC004544	BRFX016814Z	CARBON	680 1/10W J BULK
R17	RC004514	BRFX011044Z	CARBON	100K 1/10W J BULK
R18	RC004510	BRFX011004Z	CARBON	10 1/10W J BULK
R19	RC004511	BRFX011014Z	CARBON	100 1/10W J BULK
R20	RC004742	BRFX011524Z	CARBON	1.5K 1/10W J BULK
R21	RC004516	BRFX011234Z	CARBON	12K 1/10W J BULK
R22	RC004526	BRFX012234Z	CARBON	22K 1/10W J BULK
R23	RC004515	BRFX011054Z	CARBON	1M 1/10W J BULK
R24	RC004509	BRFX010004Z	CARBON	0 1/10W J BULK
R25	RC004514	BRFX011044Z	CARBON	100K 1/10W J BULK
R26	RC005664	BRFX188204Z	CARBON	82 1/8W J BULK
R27	RC004514	BRFX011044Z	CARBON	100K 1/10W J BULK
R28	RC004550	BRFX180004Z	CARBON	0 1/8W J BULK
R29	RC004522	BRFX011834Z	CARBON	18K 1/10W J BULK
R30	RC004539	BRFX014734Z	CARBON	47K 1/10W J BULK
R31	RC004511	BRFX011014Z	CARBON	100 1/10W J BULK
R32	RC004525	BRFX012224Z	CARBON	2.2K 1/10W J BULK
R33	RC003231	BRSJ222234Z	METAL OXIDE	△ 22K 1/2WS J
R34	RC002350	BRSN101514Z	METAL OXIDE(FORMED)	△ 150 1W J (P=12.5)
R35	RC004511	BRFX011014Z	CARBON	100 1/10W J BULK

LOC. NO.	PART NO.	REF NO.	DESCRIPTION		
R36	RC004511	BRFX011014Z	CARBON	100	1/10W J BULK
R37	RC004539	BRFX014734Z	CARBON	47K	1/10W J BULK
R38	RC004546	BRFX016834Z	CARBON	68K	1/10W J BULK
R39	RC004543	BRFX015644Z	CARBON	560K	1/10W J BULK
R40	RC004537	BRFX014714Z	CARBON	470	1/10W J BULK
R41	RC004537	BRFX014714Z	CARBON	470	1/10W J BULK
R42	RC004537	BRFX014714Z	CARBON	470	1/10W J BULK
R43	RC004537	BRFX014714Z	CARBON	470	1/10W J BULK
R44	RC004523	BRFX011844Z	CARBON	180K	1/10W J BULK
R45	RC004543	BRFX015644Z	CARBON	560K	1/10W J BULK
R46	RC004743	BRFX013914Z	CARBON	390	1/10W J BULK
R47	RC004540	BRFX014744Z	CARBON	470K	1/10W J BULK
R48	RC004538	BRFX014724Z	CARBON	4.7K	1/10W J BULK
R49	RC004550	BRFX180004Z	CARBON	0	1/8W J BULK
R50	RC004513	BRFX011034Z	CARBON	10K	1/10W J BULK
R51	RC004743	BRFX013914Z	CARBON	390	1/10W J BULK
R52	RC004514	BRFX011044Z	CARBON	100K	1/10W J BULK
R53	RC004525	BRFX012224Z	CARBON	2.2K	1/10W J BULK
R54	RC004572	BRFX013934Z	CARBON	39K	1/10W J BULK
R55	RC004528	BRFX012254Z	CARBON	2.2M	1/10W J BULK
R56	RC004535	BRFX013334Z	CARBON	33K	1/10W J BULK
R57	RC004545	BRFX016824Z	CARBON	6.8K	1/10W J BULK
R58	RC004539	BRFX014734Z	CARBON	47K	1/10W J BULK
R59	RC004545	BRFX016824Z	CARBON	6.8K	1/10W J BULK
R60	RC004965	BRFX184724Z	CARBON	4.7K	1/8W J BULK
R61	RC004756	BRFX184734Z	CARBON	47K	1/8W J BULK
R62	RC004512	BRFX011024Z	CARBON	1K	1/10W J BULK
R63	RC004512	BRFX011024Z	CARBON	1K	1/10W J BULK
R64	RC004512	BRFX011024Z	CARBON	1K	1/10W J BULK
R65	RC004513	BRFX011034Z	CARBON	10K	1/10W J BULK
R66	RC004513	BRFX011034Z	CARBON	10K	1/10W J BULK
R67	RC004537	BRFX014714Z	CARBON	470	1/10W J BULK
R68	RC004537	BRFX014714Z	CARBON	470	1/10W J BULK
R69	RC004566	BRFX181034Z	CARBON	10K	1/8W J BULK
R70	RC004513	BRFX011034Z	CARBON	10K	1/10W J BULK
R71	RC004527	BRFX012244Z	CARBON	220K	1/10W J BULK
R72	RC002830	BRSJ101214Z	METAL OXIDE	120	1W J
R73	RC004551	BRFX181024Z	CARBON	1K	1/8W J BULK
R74	RC004541	BRFX015624Z	CARBON	5.6K	1/10W J BULK
R75	RC004567	BRFX181844Z	CARBON	180K	1/8W J BULK
R76	RC005663	BRFX186834Z	CARBON	68K	1/8W J BULK
R77	RC004538	BRFX014724Z	CARBON	4.7K	1/10W J BULK
R78	RC004525	BRFX012224Z	CARBON	2.2K	1/10W J BULK
R79	RC004512	BRFX011024Z	CARBON	1K	1/10W J BULK
R80	RC004551	BRFX181024Z	CARBON	1K	1/8W J BULK
R81	RC004512	BRFX011024Z	CARBON	1K	1/10W J BULK

LOC. NO.	PART NO.	REF NO.	DESCRIPTION	
R82	RC004551	BRFX181024Z	CARBON	1K 1/8W J BULK
R83	RC004551	BRFX181024Z	CARBON	1K 1/8W J BULK
R84	RC004512	BRFX011024Z	CARBON	1K 1/10W J BULK
R85	RC004551	BRFX181024Z	CARBON	1K 1/8W J BULK
R86	RC004551	BRFX181024Z	CARBON	1K 1/8W J BULK
R87	RC004551	BRFX181024Z	CARBON	1K 1/8W J BULK
R88	RC004551	BRFX181024Z	CARBON	1K 1/8W J BULK
R89	RC004551	BRFX181024Z	CARBON	1K 1/8W J BULK
R90	RC004511	BRFX011014Z	CARBON	100 1/10W J BULK
R91	RC004514	BRFX011044Z	CARBON	100K 1/10W J BULK
R92	RC004514	BRFX011044Z	CARBON	100K 1/10W J BULK
R93	RC004550	BRFX180004Z	CARBON	0 1/8W J BULK
R94	RC004512	BRFX011024Z	CARBON	1K 1/10W J BULK
R95	RC004509	BRFX010004Z	CARBON	0 1/10W J BULK
R96	RC004544	BRFX016814Z	CARBON	680 1/10W J BULK
R97	RC004514	BRFX011044Z	CARBON	100K 1/10W J BULK
R98	RC004645	BRFX011064Z	CARBON	10M 1/10W J BULK
R99	RC004512	BRFX011024Z	CARBON	1K 1/10W J BULK
R100	RC004510	BRFX011004Z	CARBON	10 1/10W J BULK
R104	RC004512	BRFX011024Z	CARBON	1K 1/10W J BULK
R105	RC004510	BRFX011004Z	CARBON	10 1/10W J BULK
R106	RC004532	BRFX012744Z	CARBON	270K 1/10W J BULK
R107	RC004532	BRFX012744Z	CARBON	270K 1/10W J BULK
R108	RC004542	BRFX015634Z	CARBON	56K 1/10W J BULK
R109	RC004542	BRFX015634Z	CARBON	56K 1/10W J BULK
R110	RC004542	BRFX015634Z	CARBON	56K 1/10W J BULK
R111	RC004546	BRFX016834Z	CARBON	68K 1/10W J BULK
R112	RC004540	BRFX014744Z	CARBON	470K 1/10W J BULK
R113	RC004540	BRFX014744Z	CARBON	470K 1/10W J BULK
R114	RC005520	BRFX011043Z	CARBON	100K 1/10W F BULK
R115	RC004512	BRFX011024Z	CARBON	1K 1/10W J BULK
R116	RC004512	BRFX011024Z	CARBON	1K 1/10W J BULK
R117	RC004539	BRFX014734Z	CARBON	47K 1/10W J BULK
R118	RC004536	BRFX013344Z	CARBON	330K 1/10W J BULK
R119	RC004528	BRFX012254Z	CARBON	2.2M 1/10W J BULK
R120	RC004513	BRFX011034Z	CARBON	10K 1/10W J BULK
R121	RC004183	BRSJ001024Z	METAL OXIDE	⚠ 1K 1WS J
R122	RC004514	BRFX011044Z	CARBON	100K 1/10W J BULK
R123	RC004513	BRFX011034Z	CARBON	10K 1/10W J BULK
R124	RC004517	BRFX011244Z	CARBON	120K 1/10W J BULK
R129	RC004512	BRFX011024Z	CARBON	1K 1/10W J BULK
R130	RC004512	BRFX011024Z	CARBON	1K 1/10W J BULK
R131	RC004512	BRFX011024Z	CARBON	1K 1/10W J BULK
R132	RC004517	BRFX011244Z	CARBON	120K 1/10W J BULK
R133	RC004550	BRFX180004Z	CARBON	0 1/8W J BULK
R134	RC004512	BRFX011024Z	CARBON	1K 1/10W J BULK

LOC. NO.	PART NO.	REF NO.	DESCRIPTION	
R135	RC004517	BRFX011244Z	CARBON	120K 1/10W J BULK
R136	RC004512	BRFX011024Z	CARBON	1K 1/10W J BULK
R137	RC004518	BRFX011534Z	CARBON	15K 1/10W J BULK
R138	RC004539	BRFX014734Z	CARBON	47K 1/10W J BULK
R139	RC004525	BRFX012224Z	CARBON	2.2K 1/10W J BULK
R140	RC004534	BRFX013324Z	CARBON	3.3K 1/10W J BULK
R141	RC004534	BRFX013324Z	CARBON	3.3K 1/10W J BULK
R142	RC004525	BRFX012224Z	CARBON	2.2K 1/10W J BULK
R143	RC004534	BRFX013324Z	CARBON	3.3K 1/10W J BULK
R144	RC004525	BRFX012224Z	CARBON	2.2K 1/10W J BULK
R145	RC004514	BRFX011044Z	CARBON	100K 1/10W J BULK
R146	RC004514	BRFX011044Z	CARBON	100K 1/10W J BULK
R147	RC004756	BRFX184734Z	CARBON	47K 1/8W J BULK
R148	RC004509	BRFX010004Z	CARBON	0 1/10W J BULK
R149	RC004550	BRFX180004Z	CARBON	0 1/8W J BULK
R152	RC004514	BRFX011044Z	CARBON	100K 1/10W J BULK
R501	RC004752	BRFX181014Z	CARBON	100 1/8W J BULK
R502	RC004513	BRFX011034Z	CARBON	10K 1/10W J BULK
R503	RC004539	BRFX014734Z	CARBON	47K 1/10W J BULK
R504	RC004512	BRFX011024Z	CARBON	1K 1/10W J BULK
R505	RC004513	BRFX011034Z	CARBON	10K 1/10W J BULK
R506	RC004512	BRFX011024Z	CARBON	1K 1/10W J BULK
R507	RC004512	BRFX011024Z	CARBON	1K 1/10W J BULK
R508	RC004767	BRFX012233Z	CARBON	22K 1/10W F BULK
R509	RC004517	BRFX011244Z	CARBON	120K 1/10W J BULK
R510	RC004767	BRFX012233Z	CARBON	22K 1/10W F BULK
R511	RC004512	BRFX011024Z	CARBON	1K 1/10W J BULK
R512	RC004538	BRFX014724Z	CARBON	4.7K 1/10W J BULK
R513	RC004551	BRFX181024Z	CARBON	1K 1/8W J BULK
R514	RC004543	BRFX015644Z	CARBON	560K 1/10W J BULK
R515	RC004513	BRFX011034Z	CARBON	10K 1/10W J BULK
R516	RC004519	BRFX011544Z	CARBON	150K 1/10W J BULK
R517	RC004551	BRFX181024Z	CARBON	1K 1/8W J BULK
R518	RC004511	BRFX011014Z	CARBON	100 1/10W J BULK
R519	RC004526	BRFX012234Z	CARBON	22K 1/10W J BULK
R520	RC004510	BRFX011004Z	CARBON	10 1/10W J BULK
R521	RC004566	BRFX181034Z	CARBON	10K 1/8W J BULK
R522	RC004527	BRFX012244Z	CARBON	220K 1/10W J BULK
R523	RC005669	BRFX183944Z	CARBON	390K 1/8W J BULK
R524	RC004535	BRFX013334Z	CARBON	33K 1/10W J BULK
R525	RC004178	BRPA612234Z	CARBON	22K 1/6W J TAPING
R526	RC005668	BRFX183914Z	CARBON	390 1/8W J BULK
R527	RC004551	BRFX181024Z	CARBON	1K 1/8W J BULK
R528	RC004551	BRFX181024Z	CARBON	1K 1/8W J BULK
R529	RC004551	BRFX181024Z	CARBON	1K 1/8W J BULK
R530	RC004566	BRFX181034Z	CARBON	10K 1/8W J BULK

LOC. NO.	PART NO.	REF NO.	DESCRIPTION	
R531	RC004742	BRFX011524Z	CARBON	1.5K 1/10W J BULK
R532	RC004513	BRFX011034Z	CARBON	10K 1/10W J BULK
R533	RC004512	BRFX011024Z	CARBON	1K 1/10W J BULK
R534	RC004538	BRFX014724Z	CARBON	4.7K 1/10W J BULK
R535	RC004513	BRFX011034Z	CARBON	10K 1/10W J BULK
R536	RC004529	BRFX012714Z	CARBON	270 1/10W J BULK
R537	RC004572	BRFX013934Z	CARBON	39K 1/10W J BULK
R538	RC004525	BRFX012224Z	CARBON	2.2K 1/10W J BULK
R539	RC004514	BRFX011044Z	CARBON	100K 1/10W J BULK
R540	RC005112	BRFX013924Z	CARBON	3.9K 1/10W J BULK
R541	RC004527	BRFX012244Z	CARBON	220K 1/10W J BULK
R542	RC004535	BRFX013334Z	CARBON	33K 1/10W J BULK
R543	RC004513	BRFX011034Z	CARBON	10K 1/10W J BULK
R544	RC004525	BRFX012224Z	CARBON	2.2K 1/10W J BULK
R545	RC004513	BRFX011034Z	CARBON	10K 1/10W J BULK
R546	RC004513	BRFX011034Z	CARBON	10K 1/10W J BULK
R548	RC004525	BRFX012224Z	CARBON	2.2K 1/10W J BULK
R549	RC004525	BRFX012224Z	CARBON	2.2K 1/10W J BULK
R550	RC004509	BRFX010004Z	CARBON	0 1/10W J BULK
R551	RC005002	BRFX013304Z	CARBON	33 1/10W J BULK
R552	RC005002	BRFX013304Z	CARBON	33 1/10W J BULK
R553	RC004513	BRFX011034Z	CARBON	10K 1/10W J BULK
R554	RC004513	BRFX011034Z	CARBON	10K 1/10W J BULK
R555	RC004513	BRFX011034Z	CARBON	10K 1/10W J BULK
R556	RC004534	BRFX013324Z	CARBON	3.3K 1/10W J BULK
R557	RC004534	BRFX013324Z	CARBON	3.3K 1/10W J BULK
R558	RC004756	BRFX184734Z	CARBON	47K 1/8W J BULK
R559	RC004513	BRFX011034Z	CARBON	10K 1/10W J BULK
R560	RC004514	BRFX011044Z	CARBON	100K 1/10W J BULK
R561	RC005173	BRFX015604Z	CARBON	56 1/10W J BULK
R562	RC004509	BRFX010004Z	CARBON	0 1/10W J BULK
R563	RC004509	BRFX010004Z	CARBON	0 1/10W J BULK
R564	RC004550	BRFX180004Z	CARBON	0 1/8W J BULK
R565	RC004550	BRFX180004Z	CARBON	0 1/8W J BULK
R566	RC004509	BRFX010004Z	CARBON	0 1/10W J BULK
R567	RC004509	BRFX010004Z	CARBON	0 1/10W J BULK
R568	RC004513	BRFX011034Z	CARBON	10K 1/10W J BULK
R569	RC004566	BRFX181034Z	CARBON	10K 1/8W J BULK
R570	RC004513	BRFX011034Z	CARBON	10K 1/10W J BULK
R571	RC004513	BRFX011034Z	CARBON	10K 1/10W J BULK
R572	RC004539	BRFX014734Z	CARBON	47K 1/10W J BULK
R573	RC004539	BRFX014734Z	CARBON	47K 1/10W J BULK
R574	RC004539	BRFX014734Z	CARBON	47K 1/10W J BULK
R575	RC004539	BRFX014734Z	CARBON	47K 1/10W J BULK
R576	RC004533	BRFX013314Z	CARBON	330 1/10W J BULK
R577	RC004514	BRFX011044Z	CARBON	100K 1/10W J BULK

LOC. NO.	PART NO.	REF NO.	DESCRIPTION	
R578	RC004527	BRFX012244Z	CARBON	220K 1/10W J BULK
R579	RC004513	BRFX011034Z	CARBON	10K 1/10W J BULK
R580	RC004540	BRFX014744Z	CARBON	470K 1/10W J BULK
R581	RC004513	BRFX011034Z	CARBON	10K 1/10W J BULK
R582	RC004551	BRFX181024Z	CARBON	1K 1/8W J BULK
R583	RC004512	BRFX011024Z	CARBON	1K 1/10W J BULK
R584	RC004526	BRFX012234Z	CARBON	22K 1/10W J BULK
R585	RC004512	BRFX011024Z	CARBON	1K 1/10W J BULK
R586	RC004544	BRFX016814Z	CARBON	680 1/10W J BULK
R587	RC004542	BRFX015634Z	CARBON	56K 1/10W J BULK
R588	RC004512	BRFX011024Z	CARBON	1K 1/10W J BULK
R589	RC005670	BRFX184704Z	CARBON	47 1/8W J BULK
R590	RC004756	BRFX184734Z	CARBON	47K 1/8W J BULK
R591	RC004511	BRFX011014Z	CARBON	100 1/10W J BULK
R592	RC004550	BRFX180004Z	CARBON	0 1/8W J BULK
R593	RC004512	BRFX011024Z	CARBON	1K 1/10W J BULK
R594	RC004753	BRFX181044Z	CARBON	100K 1/8W J BULK
R595	RC004514	BRFX011044Z	CARBON	100K 1/10W J BULK
R596	RC004512	BRFX011024Z	CARBON	1K 1/10W J BULK
R597	RC004512	BRFX011024Z	CARBON	1K 1/10W J BULK
R598	RC004572	BRFX013934Z	CARBON	39K 1/10W J BULK
R599	RC004512	BRFX011024Z	CARBON	1K 1/10W J BULK
R601	RC004509	BRFX010004Z	CARBON	0 1/10W J BULK
R602	RC004509	BRFX010004Z	CARBON	0 1/10W J BULK
R606	RC004550	BRFX180004Z	CARBON	0 1/8W J BULK
R607	RC004509	BRFX010004Z	CARBON	0 1/10W J BULK
R608	RC004550	BRFX180004Z	CARBON	0 1/8W J BULK
R609	RC004550	BRFX180004Z	CARBON	0 1/8W J BULK
RT1	RC004674	BRTY0572504	SEMI-FIXED	RT-572 NVZ6TL1B504 500KB
RT501	RC005543	BRTY0550474	SEMI-FIXED	RT-550 470KB
SWITCHES				
S1	RC003604	BSWY0755001		SW-755 SBHA12B-06
S2	RC004253	BSWY0784001		SW-784 KSM0611B
CRYSTALS				
X1	RC004251	BQXY0573001		QX-573 10.240MHZ
X2	RC003599	BQXY0492001		QX-492 3.579545M
X501	RC003746	BQXY0565001		QX-565 10.24MHZ
X502	RC003720	BQXY0526001		QX-526 4.192M
OTHER ELECTRICAL PARTS				
AD901	RC005139	BADY0213001	AC ADAPTOR	△ AD-213 HY-7087
AT701	RC005176	BATY0292001	ANTENNA	△ AT-292 TY-9512-0802
AT801	RC004273	BATY0268001	ANTENNA	AT-268 ANT1CP-079

LOC. NO.	PART NO.	REF NO.	DESCRIPTION
BT901	RC004362	BBTY0291001	BATTERY BT-291 AA-884(3N-270AA)
DP501	RC005538	BDLY0166001	MODULE:LCD DL-166 NCOG-030
MC501	RC004062	BMKY0475001	MICROPHONE MK-475 WM-034BZ
RL1	RC000867	BRLY0042001	RELAY ⚠ RL-042 OMR-108H
SP501	RC002358	BYYY0438001	PIEZO ELECTRIC BUZZER YY-438 CB-12GP
SP801	RC004272	BSPY0348001	SPEAKER SP-348 KR-286HA
WA801	RC002514	CZDZ071854Z	WIRES ASSEMBLED ⚠ W-071854
WA901	RC001861	BWZY1082001	CORD:TEL CORD ⚠ WZ-1082 1850 W/P
WA902	RC001872	BWZY1101001	CORD:TEL CORD ⚠ WZ-1101 230W/P
PACKING PARTS			
	RC005198	UDZZ73535ZZ	CAUTION BELT
	RC004291	WETC420086Z	COVER:ANT EPE
	RC008724	WBXZ358279Z	DISPLAY BOX
	RC004688	PLBB454286Z	LABEL:BARCODE PAPER
	RC004689	PLBB454287Z	LABEL:BARCODE PAPER
	RC008740	UDZZ01559ZZ	OWNER'S MANUAL
	RC005458	WSLV429033Z	PACKING BAG MIRA MAT
	RC005566	WSLV156469Z	PULPMOLD PAD
	RC005564	UDZZ69545ZZ	QUICK REFERENCE GUIDE
	RC008804	WCTZ458166Z	SHIPPING CARTON BOX
	RC005080	WSLV453148Z	SLEEVE
	RC005567	WSLV457135Z	SLEEVE
	RC008720	VNYL2304070	VINYL BAG 300X400X700X0.07T
	RC005454	VNYH1153500	VINYL BAG 150X350X0.05T HIPE
	RC005455	VNYH1304000	VINYL BAG 300X400X0.05T HIPE
	RC002946	VNYL3070800	VINYL BAG 70X80X0.1T

ASSEMBLY PARTS LIST

NOTE: Following part numbers are not available as replacement parts.

Order parts necessary for repair or contact the Toshiba Factory Service Center.

LOC. NO.	PART NO.	REF NO.	DESCRIPTION
	RC008805 RC008806	AD559ZLBA AD559ZLPA	BASE MAIN ASSEMBLY HANDSET MAIN ASSEMBLY

SPECIFICATIONS

MEASUREMENT CONDITIONS

1. Standard voltage:

Handset: DC 3.6 V \pm 0.025 V
Base: AC 120 V \pm 3 V 60 Hz

2. Temperature: 25°C \pm 5 °C

3. Channel:

CH	Handset (TX Frequency)	Base (TX Frequency)
1	48.760 MHz	43.720 MHz
2	48.840 MHz	43.740 MHz
3	48.860 MHz	43.820 MHz
4	48.920 MHz	43.840 MHz
5	49.020 MHz	43.920 MHz
6	49.080 MHz	43.960 MHz
7	49.100 MHz	44.120 MHz
8	49.160 MHz	44.160 MHz
9	49.200 MHz	44.180 MHz
10	49.240 MHz	44.200 MHz
11	49.280 MHz	44.320 MHz
12	49.360 MHz	44.360 MHz
13	49.400 MHz	44.400 MHz
14	49.460 MHz	44.460 MHz
15	49.500 MHz	44.480 MHz
16	49.670 MHz	46.610 MHz
17	49.845 MHz	46.630 MHz
18	49.860 MHz	46.670 MHz
19	49.770 MHz	46.710 MHz
20	49.875 MHz	46.730 MHz
21	49.830 MHz	46.770 MHz
22	49.890 MHz	46.830 MHz
23	49.930 MHz	46.870 MHz
24	49.990 MHz	46.930 MHz
25	49.970 MHz	46.970 MHz

4. Telephone Line Voltage/Load: DC 48 V \pm 2 V/600 ohm

5. Ring Frequency: 20 Hz

6. Ring Duration: 2 sec ON, 4 sec OFF

7. Standard Modulation: 1 kHz \pm 3 kHz Dev.

8. Secure Code: 65536 Combination

9. Method of Measurement: According to EIA Standard, RS-316A

10. Portable RX Load: 150 ohm

BASE UNIT

RECEIVER

		Unit	Nominal	Limit
1. Sensitivity 12 dB SINAD		μV	0.6	1.5
2. Bandwidth at 6 dB down		kHz	17	12
3. Frequency Response	0.3 kHz	dB	-3.5	-7.5 ~ +0.5
	3.0 kHz	dB	-5	-9 ~ -1
4. Distortion at 1 mV Input		%	2	7
5. S/N ratio at 1 mV RF Input		dB	66	60

TRANSMITTER

1. RF Power at 50 Ω Load		dBm	-6	-11 ~ -1
2. Modulation Sensitivity (Tel Line Input -15 dBm)		kHz Dev	± 3	$\pm 2 \sim \pm 4.2$
3. Frequency Response	0.3 kHz	dB	0	-4 ~ +4
	3.0 kHz	dB	0	-4 ~ +4
4. Frequency Tolerance		Hz	± 600	± 1500

TELEPHONE LINE

1. Off-hook Impedance	(at 1 kHz)	ohm	1000	230 ~ 1570
2. Off-hook DC Resistance	(DC 40 mA)	ohm	230	100 ~ 300
3. Minimum Ringer Input Level	(at 20 Hz)	Vrms	23	40

TELEPHONE DIAL UNIT

1. PULSE DIALING				
a. Dialing Rate	10 pps	pps	10	8 ~ 11
b. Make Ratio	10 pps	%	40	36 ~ 42
2. DTMF DIALING				
a. DTMF Frequency				
Row 1		Hz	697	687 ~ 707
Row 2		Hz	770	759 ~ 781
Row 3		Hz	852	840 ~ 864
Row 4		Hz	941	927 ~ 955
Column 1		Hz	1209	1191 ~ 1227
Column 2		Hz	1336	1316 ~ 1356
Column 3		Hz	1477	1455 ~ 1499
b. Signal Level on Single Tone				
Low Group		dBm	-7	> -10
High Group		dBm	-5	> -8
c. High Group Component/ Low Group Component Difference				
		dB	2	0 ~ 4

HANDSET UNIT

RECEIVER		Unit	Nominal	Limit
1. Sensitivity 12 dB SINAD		μV	0.5	1.0
2. Bandwidth at 6 dB down		kHz	16	12
3. Frequency Response	0.3 kHz	dB	-3	-7 ~ +1
	3.0 kHz	dB	-6	-10 ~ -2
4. Audio Output Power at 1 mV Input		mV	115	75 ~ 170
5. Distortion at 1 mV Input		%	1	6
6. S/N ratio at 1 mV RF Input		dB	70	55
7. Leakage Ring Level at Ear Piece		dB SPL	75	120
8. Ringer Level at 30 cm from Ringer (Page)		dB SPL	83	75
9. Page Tone Level		dB SPL	83	75

TRANSMITTER

1. RF Power at 50 Ω Load		dBm	+1	-3 ~ +7
2. Modulation Sensitivity (at ±3 kHz Dev.)		kHz Dev	±3	±2 ~ ±4.2
3. Frequency Response	0.3 kHz	dB	-4.5	-8.5 ~ -0.5
	3.0 kHz	dB	-1	-4 ~ +3
4. Frequency Tolerance		Hz	±400	±1500

POWER CONSUMPTION

1. Base Unit 9 V DC (TEL LINE ON)		mA	70	90
2. Handset Unit				
a. Stand-by (average)		mA	1.0	1.5
b. In-use		mA	30	45
3. Battery Charge Current with Full-charged Battery		mA	19	14 ~ 29

Battery Low Light: Turn-on Level 3.05 to 3.55 V

Battery: 270 mA·h (@1.2 V x3=3.6)

Mode Switch: DTMF-Pulse (10 pps) Selectable

Memory: 1 Redial Memory (32 digits)

20 Dial Memories (Number: 16 digits, Name: 12 digits, Backup Time: min. 24 hours)

40 CID Memories (Number: 16 digits, Name: 16 digits, Backup Time: min. 24 hours)

Operating Temperature: -10 °C ~ 50 °C

Storage Temperature: -20 °C ~ 60 °C

REQUIREMENTS COMPLIANCE

Unit is designed to fully meet with UL 1459 and FCC Rules, Part 15 and 68 for USA, or with applicable CSA and IC standards for Canada.

Note: Nominal specs represent the design specs. All units should be able to approximate these ¾ some will exceed and some may drop slightly below these specs. Limit specs represent the absolute worst condition that still might be considered acceptable; in no case should a unit fail to meet limit specs.

APPENDIX

Deletion of the Caller ID memory

To delete the Caller ID memory in the EEPROM, proceed with the following steps:

- 1) Turn the power ON while pressing the handset "★" and "#" buttons at the same time for about 1 second.
- 2) Press CID (Caller ID) button. Then, the Caller ID memory will be deleted with the confirmation beep sound.

Information of the Serial No. for Model FT-7807R

The production of Model FT-7807R was started in April 1998, and the Serial No. started from 846000001.

TOSHIBA AMERICA CONSUMER PRODUCTS, INC.

82 TOTOWA ROAD, WAYNE, N.J. 07470

TOSHIBA HAWAII, INC.

327 KAMAKEE ST., HONOLULU, H.I. 96814